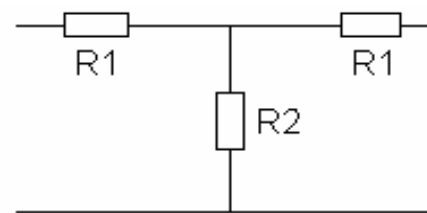


PI Verzwakker

Z=	50Ω		75Ω		PE1FOD
0.5 dB	R1=	2.9 Ohm R2= 1737.7 Ohm	R1=	4.3 Ohm R2= 2606.5 Ohm	
1.0 dB	R1=	5.8 Ohm R2= 869.6 Ohm	R1=	8.7 Ohm R2= 1304.3 Ohm	
1.5 dB	R1=	8.7 Ohm R2= 580.5 Ohm	R1=	13.0 Ohm R2= 870.8 Ohm	
2.0 dB	R1=	11.6 Ohm R2= 436.2 Ohm	R1=	17.4 Ohm R2= 654.3 Ohm	
2.5 dB	R1=	14.6 Ohm R2= 349.8 Ohm	R1=	21.9 Ohm R2= 524.8 Ohm	
3.0 dB	R1=	17.6 Ohm R2= 292.4 Ohm	R1=	26.4 Ohm R2= 438.6 Ohm	
3.5 dB	R1=	20.7 Ohm R2= 251.5 Ohm	R1=	31.1 Ohm R2= 377.3 Ohm	
4.0 dB	R1=	23.9 Ohm R2= 221.0 Ohm	R1=	35.8 Ohm R2= 331.5 Ohm	
4.5 dB	R1=	27.1 Ohm R2= 197.3 Ohm	R1=	40.6 Ohm R2= 296.0 Ohm	
5.0 dB	R1=	30.4 Ohm R2= 178.5 Ohm	R1=	45.6 Ohm R2= 267.7 Ohm	
5.5 dB	R1=	33.8 Ohm R2= 163.2 Ohm	R1=	50.7 Ohm R2= 244.8 Ohm	
6.0 dB	R1=	37.4 Ohm R2= 150.5 Ohm	R1=	56.0 Ohm R2= 225.7 Ohm	
6.5 dB	R1=	41.0 Ohm R2= 139.8 Ohm	R1=	61.5 Ohm R2= 209.7 Ohm	
7.0 dB	R1=	44.8 Ohm R2= 130.7 Ohm	R1=	67.2 Ohm R2= 196.1 Ohm	
7.5 dB	R1=	48.7 Ohm R2= 122.9 Ohm	R1=	73.1 Ohm R2= 184.4 Ohm	
8.0 dB	R1=	52.8 Ohm R2= 116.1 Ohm	R1=	79.3 Ohm R2= 174.2 Ohm	
8.5 dB	R1=	57.1 Ohm R2= 110.2 Ohm	R1=	85.7 Ohm R2= 165.3 Ohm	
9.0 dB	R1=	61.6 Ohm R2= 105.0 Ohm	R1=	92.4 Ohm R2= 157.5 Ohm	
9.5 dB	R1=	66.3 Ohm R2= 100.4 Ohm	R1=	99.4 Ohm R2= 150.6 Ohm	
10.0 dB	R1=	71.2 Ohm R2= 96.3 Ohm	R1=	106.7 Ohm R2= 144.4 Ohm	
10.5 dB	R1=	76.3 Ohm R2= 92.6 Ohm	R1=	114.4 Ohm R2= 138.8 Ohm	
11.0 dB	R1=	81.7 Ohm R2= 89.2 Ohm	R1=	122.5 Ohm R2= 133.9 Ohm	
11.5 dB	R1=	87.3 Ohm R2= 86.3 Ohm	R1=	131.0 Ohm R2= 129.4 Ohm	
12.0 dB	R1=	93.3 Ohm R2= 83.5 Ohm	R1=	139.9 Ohm R2= 125.3 Ohm	
12.5 dB	R1=	99.5 Ohm R2= 81.1 Ohm	R1=	149.2 Ohm R2= 121.6 Ohm	
13.0 dB	R1=	106.1 Ohm R2= 78.8 Ohm	R1=	159.1 Ohm R2= 118.3 Ohm	
13.5 dB	R1=	113.0 Ohm R2= 76.8 Ohm	R1=	169.5 Ohm R2= 115.2 Ohm	
14.0 dB	R1=	120.3 Ohm R2= 74.9 Ohm	R1=	180.5 Ohm R2= 112.4 Ohm	
14.5 dB	R1=	128.0 Ohm R2= 73.2 Ohm	R1=	192.0 Ohm R2= 109.8 Ohm	
15.0 dB	R1=	136.1 Ohm R2= 71.6 Ohm	R1=	204.2 Ohm R2= 107.4 Ohm	
15.5 dB	R1=	144.7 Ohm R2= 70.2 Ohm	R1=	217.1 Ohm R2= 105.3 Ohm	
16.0 dB	R1=	153.8 Ohm R2= 68.8 Ohm	R1=	230.7 Ohm R2= 103.3 Ohm	
16.5 dB	R1=	163.4 Ohm R2= 67.6 Ohm	R1=	245.0 Ohm R2= 101.4 Ohm	
17.0 dB	R1=	173.5 Ohm R2= 66.5 Ohm	R1=	260.2 Ohm R2= 99.7 Ohm	
17.5 dB	R1=	184.1 Ohm R2= 65.4 Ohm	R1=	276.2 Ohm R2= 98.1 Ohm	
18.0 dB	R1=	195.4 Ohm R2= 64.4 Ohm	R1=	293.2 Ohm R2= 96.6 Ohm	
18.5 dB	R1=	207.4 Ohm R2= 63.5 Ohm	R1=	311.1 Ohm R2= 95.2 Ohm	
19.0 dB	R1=	220.0 Ohm R2= 62.6 Ohm	R1=	330.0 Ohm R2= 94.0 Ohm	
19.5 dB	R1=	233.4 Ohm R2= 61.9 Ohm	R1=	350.1 Ohm R2= 92.8 Ohm	
20.0 dB	R1=	247.5 Ohm R2= 61.1 Ohm	R1=	371.3 Ohm R2= 91.7 Ohm	



T Verzwakker

Z=	50Ω		75Ω		PE1FOD
0.5 dB	R1=	1.4 Ohm R2= 868.1 Ohm	R1=	2.2 Ohm R2= 1302.2 Ohm	
1.0 dB	R1=	2.9 Ohm R2= 433.3 Ohm	R1=	4.3 Ohm R2= 650.0 Ohm	
1.5 dB	R1=	4.3 Ohm R2= 288.1 Ohm	R1=	6.5 Ohm R2= 432.1 Ohm	
2.0 dB	R1=	5.7 Ohm R2= 215.2 Ohm	R1=	8.6 Ohm R2= 322.9 Ohm	
2.5 dB	R1=	7.2 Ohm R2= 171.3 Ohm	R1=	10.7 Ohm R2= 257.0 Ohm	
3.0 dB	R1=	8.6 Ohm R2= 141.9 Ohm	R1=	12.8 Ohm R2= 212.9 Ohm	
3.5 dB	R1=	9.9 Ohm R2= 120.8 Ohm	R1=	14.9 Ohm R2= 181.2 Ohm	
4.0 dB	R1=	11.3 Ohm R2= 104.8 Ohm	R1=	17.0 Ohm R2= 157.2 Ohm	
4.5 dB	R1=	12.7 Ohm R2= 92.3 Ohm	R1=	19.0 Ohm R2= 138.5 Ohm	
5.0 dB	R1=	14.0 Ohm R2= 82.2 Ohm	R1=	21.0 Ohm R2= 123.4 Ohm	
5.5 dB	R1=	15.3 Ohm R2= 73.9 Ohm	R1=	23.0 Ohm R2= 110.9 Ohm	
6.0 dB	R1=	16.6 Ohm R2= 66.9 Ohm	R1=	24.9 Ohm R2= 100.4 Ohm	
6.5 dB	R1=	17.9 Ohm R2= 61.0 Ohm	R1=	26.8 Ohm R2= 91.4 Ohm	
7.0 dB	R1=	19.1 Ohm R2= 55.8 Ohm	R1=	28.7 Ohm R2= 83.7 Ohm	
7.5 dB	R1=	20.3 Ohm R2= 51.3 Ohm	R1=	30.5 Ohm R2= 76.9 Ohm	
8.0 dB	R1=	21.5 Ohm R2= 47.3 Ohm	R1=	32.3 Ohm R2= 71.0 Ohm	
8.5 dB	R1=	22.7 Ohm R2= 43.8 Ohm	R1=	34.0 Ohm R2= 65.7 Ohm	
9.0 dB	R1=	23.8 Ohm R2= 40.6 Ohm	R1=	35.7 Ohm R2= 60.9 Ohm	
9.5 dB	R1=	24.9 Ohm R2= 37.7 Ohm	R1=	37.4 Ohm R2= 56.6 Ohm	
10.0 dB	R1=	26.0 Ohm R2= 35.1 Ohm	R1=	39.0 Ohm R2= 52.7 Ohm	
10.5 dB	R1=	27.0 Ohm R2= 32.8 Ohm	R1=	40.5 Ohm R2= 49.2 Ohm	
11.0 dB	R1=	28.0 Ohm R2= 30.6 Ohm	R1=	42.0 Ohm R2= 45.9 Ohm	
11.5 dB	R1=	29.0 Ohm R2= 28.6 Ohm	R1=	43.5 Ohm R2= 43.0 Ohm	
12.0 dB	R1=	29.9 Ohm R2= 26.8 Ohm	R1=	44.9 Ohm R2= 40.2 Ohm	
12.5 dB	R1=	30.8 Ohm R2= 25.1 Ohm	R1=	46.3 Ohm R2= 37.7 Ohm	
13.0 dB	R1=	31.7 Ohm R2= 23.6 Ohm	R1=	47.6 Ohm R2= 35.4 Ohm	
13.5 dB	R1=	32.6 Ohm R2= 22.1 Ohm	R1=	48.8 Ohm R2= 33.2 Ohm	
14.0 dB	R1=	33.4 Ohm R2= 20.8 Ohm	R1=	50.1 Ohm R2= 31.2 Ohm	
14.5 dB	R1=	34.2 Ohm R2= 19.5 Ohm	R1=	51.2 Ohm R2= 29.3 Ohm	
15.0 dB	R1=	34.9 Ohm R2= 18.4 Ohm	R1=	52.4 Ohm R2= 27.6 Ohm	
15.5 dB	R1=	35.6 Ohm R2= 17.3 Ohm	R1=	53.4 Ohm R2= 25.9 Ohm	
16.0 dB	R1=	36.3 Ohm R2= 16.3 Ohm	R1=	54.5 Ohm R2= 24.4 Ohm	
16.5 dB	R1=	37.0 Ohm R2= 15.3 Ohm	R1=	55.5 Ohm R2= 23.0 Ohm	
17.0 dB	R1=	37.6 Ohm R2= 14.4 Ohm	R1=	56.4 Ohm R2= 21.6 Ohm	
17.5 dB	R1=	38.2 Ohm R2= 13.6 Ohm	R1=	57.4 Ohm R2= 20.4 Ohm	
18.0 dB	R1=	38.8 Ohm R2= 12.8 Ohm	R1=	58.2 Ohm R2= 19.2 Ohm	
18.5 dB	R1=	39.4 Ohm R2= 12.1 Ohm	R1=	59.1 Ohm R2= 18.1 Ohm	
19.0 dB	R1=	39.9 Ohm R2= 11.4 Ohm	R1=	59.9 Ohm R2= 17.0 Ohm	
19.5 dB	R1=	40.4 Ohm R2= 10.7 Ohm	R1=	60.6 Ohm R2= 16.1 Ohm	
20.0 dB	R1=	40.9 Ohm R2= 10.1 Ohm	R1=	61.4 Ohm R2= 15.2 Ohm	