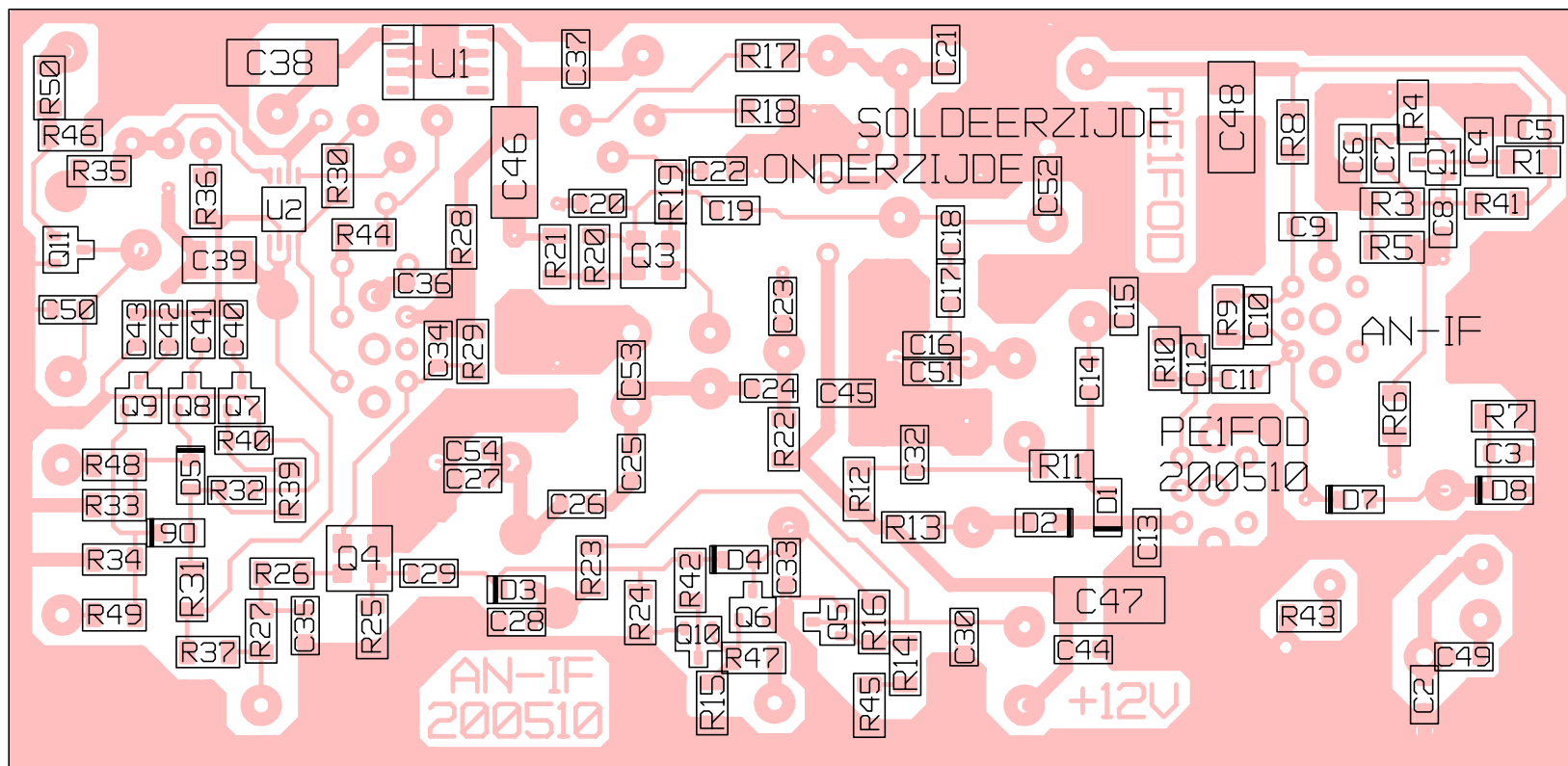


X=107.95mm Y=52.95mm



Item	Aantal	Referentie	Part	Behuizing	
1	3	C2,C3,C53	22pF	SMD 0805	
2	1	C3	220pF	SMD 0805	
3	12	C4,C5,C9,C21,C22,C23,C30, C32,C35,C36,C44,C45	10nF	SMD 0805	
4	2	C6,C14	33pF	SMD 0805	
5	2	C7,C8	47pF	SMD 0805	
6	3	C10,C34,C43	150pF	SMD 0805	
7	2	C11,C49	15pF	SMD 0805	
8	1	C12	270pF	SMD 0805	
9	1	C13	470pF	SMD 0805	
10	1	C15	680pF	SMD 0805	
11	3	C16,C50,C51	82pF	SMD 0805	
12	2	C17,C25	1.8pF	SMD 0805	
13	2	C18,C26	1.5pF	SMD 0805	
14	1	C19	180pF	SMD 0805	
15	2	C20,C42	330pF	SMD 0805	
16	1	C24	120pF	SMD 0805	
17	2	C27,C54	68pF	SMD 0805	
18	1	C28	2.7nF	SMD 0805	
19	1	C29	1nF	SMD 0805	
20	1	C33	56pF	SMD 0805	
21	1	C37	100nF	SMD 0805	
22	4	C38,C46,C47,C48	10uF	SMD 2413	
23	1	C39	4u7	SMD 1210	
24	1	C40	3.3nF	SMD 0805	
25	1	C41	1.5nF	SMD 0805	
26	8	D1,D2,D3,D4,D5,D6,D7,D8	MCL4148	SMD 0805	
27	5	L1,L11,L12,L13,L15	100uH	Axial	
28	3	L2,L4,L10	LIF 10.7	7mm	
29	1	L3	0.7uH	Axial	
30	4	L5,L6,L7,L9	5.8uH	Ringkern 9.5mm	
31	1	L8	0.27uH	Axial	
32	1	N1	33En	NTC Niet plaatsen!	
33	1	N2	1kn	NTC Niet plaatsen!	
34	2	P1,P2	1kp	Instel pot rond	
35	1	P3	10kp	Instel pot rechthoekig	
36	8	Q1,Q5,Q6,Q7,Q8,Q9,Q10,Q11	2N7002	SMD SOT-23	
37	3	Q2,Q3,Q4	BF998	SMD SOT-143	
38	7	R1,R8,R18,R22,R28,R30,R35	220E	SMD 1206	
39	8	R3,R5,R7,R20,R25,R31,R39,R41	100k	SMD 1206	
40	8	R4,R9,R29,R44,R47,R48,R49,R50	1k	SMD 1206	
41	5	R6,R19,R21,R26,R43	33E	SMD 1206	
42	5	R10,R11,R12,R13,R23	3k0	SMD 1206	
43	8	R14,R15,R33,R34,R36,R37,R45,R46	12k4	SMD 1206	
44	4	R16,R24,R27,R42	10k	SMD 1206	
45	1	R17	2k7	SMD 1206	
46	2	R32,R40	390k	SMD 0805	
47	5	TC1,TC2,TC3,TC4,TC5	2-20pF	Trimmer	
48	1	TP1	IF-in	Aansluit punt	
49	1	TP2	+12V	Aansluit punt	
50	1	TP3	250KHz/25KHz	Aansluit punt	
51	1	TP4	IF-Gain	Aansluit punt	
52	1	TP5	Y-out	Aansluit punt	
53	1	TP6	VF1	Aansluit punt	
54	1	TP7	VF2	Aansluit punt	
55	1	TP8	Blank-2	Aansluit punt	
56	1	U1	LM78L05SM	SMD SO-08	
57	1	U2	AD8310	SMD SSO-10	
58	1	Y1	24.576MHz	SMD	
52	1	PCB	AN-IF		
52	1	Blikje	108x 53mm		