

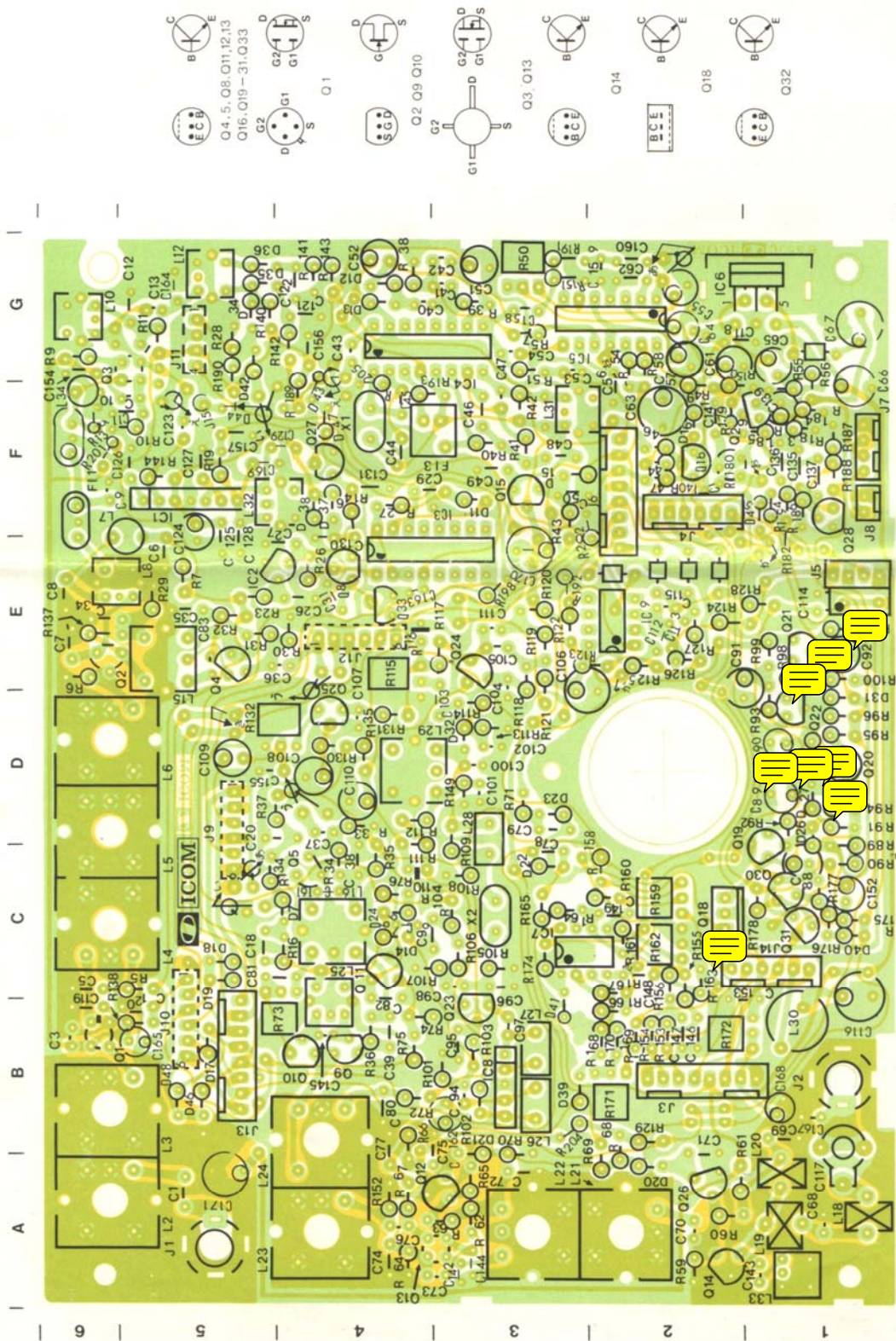
# IC-260<sup>A/E</sup>

144MHz ALL MODE TRANSCEIVER

## BOARD LAYOUT

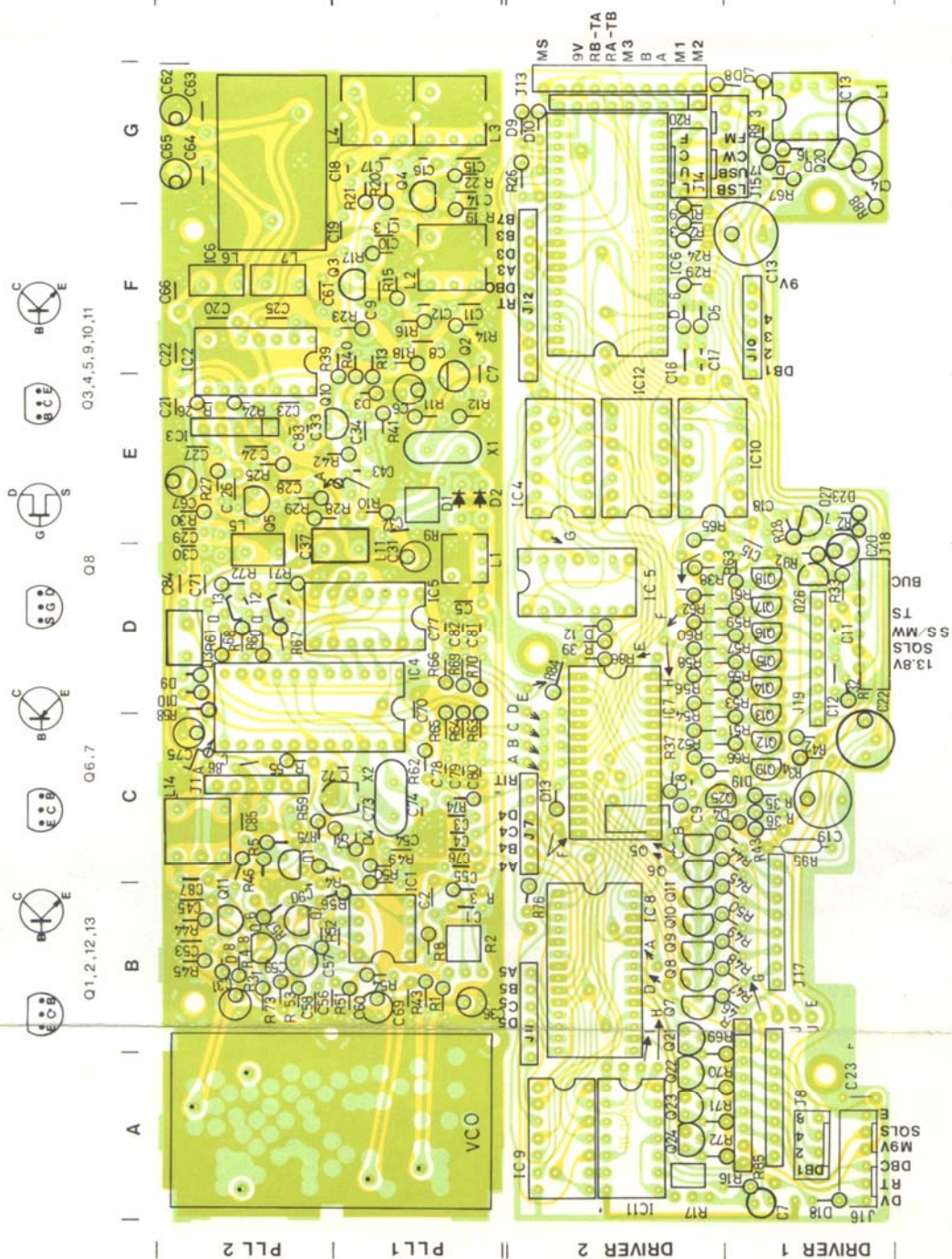


# MAIN UNIT

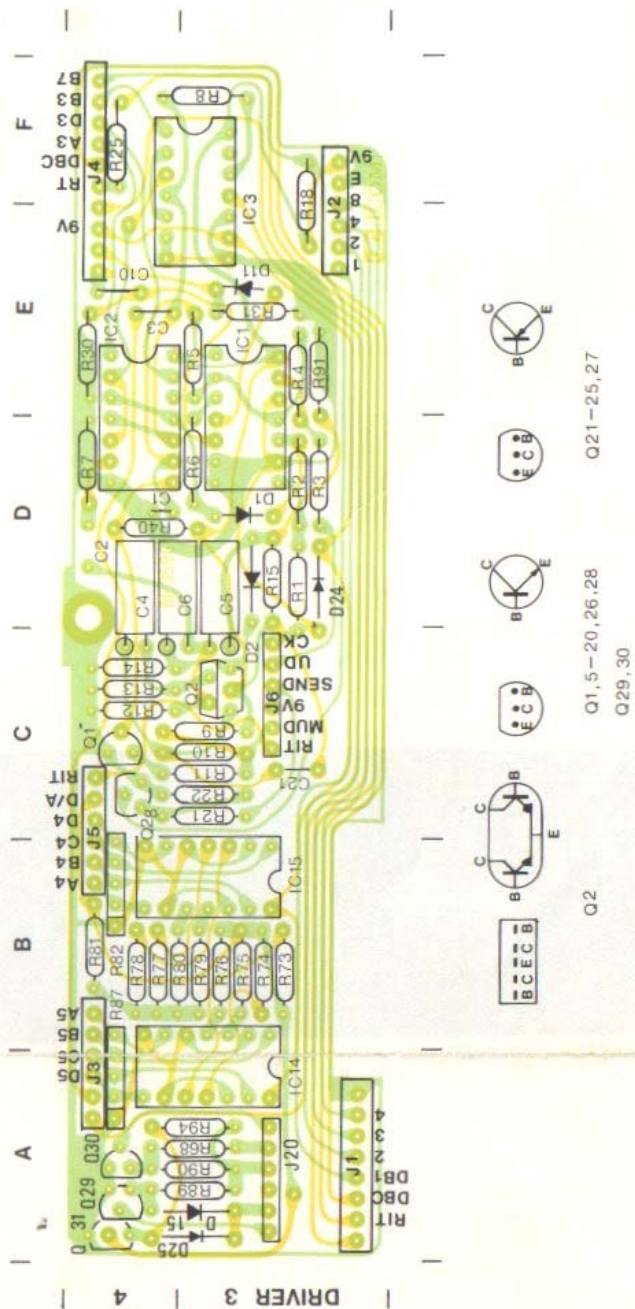




## PLL / DRIVER UNIT



■ DRIVER SUB BOARD



# SSB UNIT

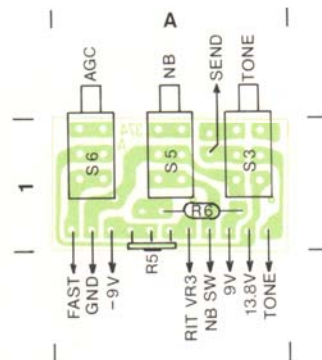
Q1, Q2 Q3, 6, 7, 8, 9, 11 Q5, Q10 Q4



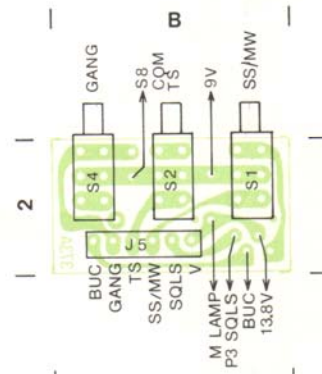
# POWER AMPLIFIER UNIT

## EF UNIT

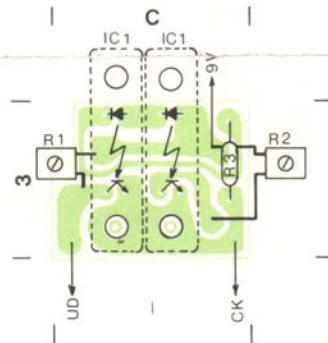
### ■ SWITCH BOARD (D)



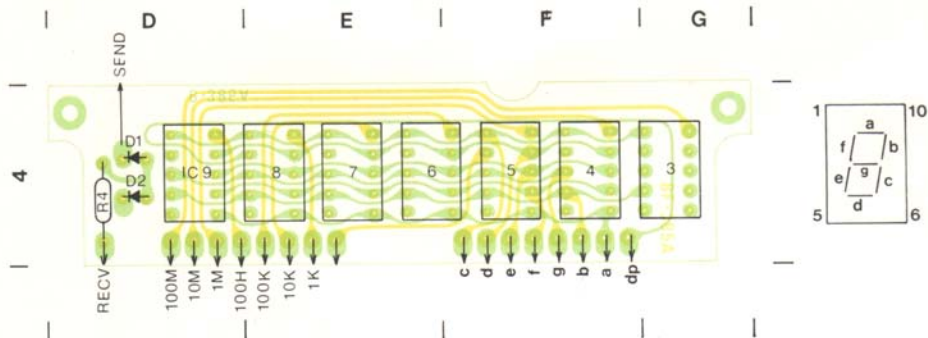
### ■ SWITCH BOARD (E)

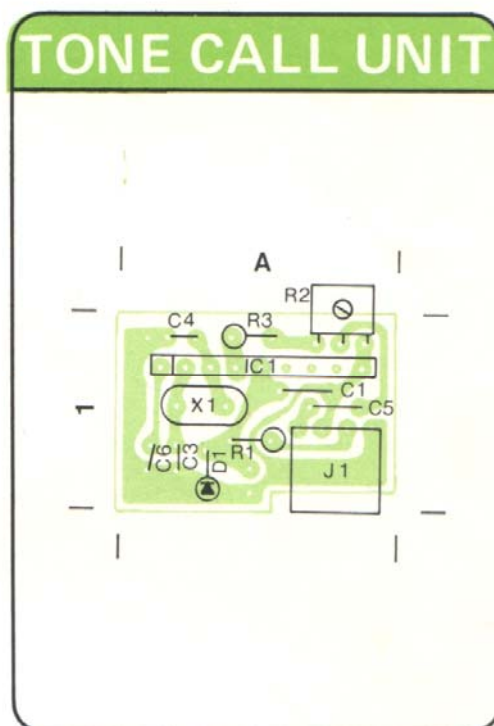
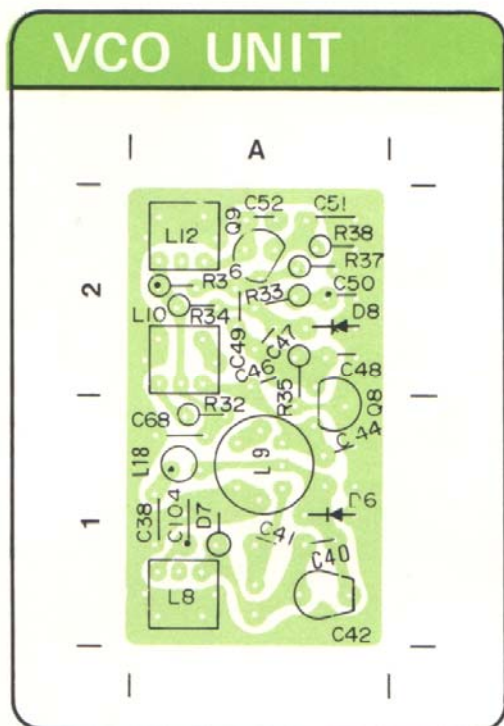


### ■ LEI BOARD



### ■ DISPLAY BOARD







## UNIT LAYOUT

