

SW2=Cent/mark

TP4=BLK-2

SW1=50Hz Sync

TP5=+5V

TP11=AC6V

TP10=GND

TP8=-12V

TP3=BLK-1

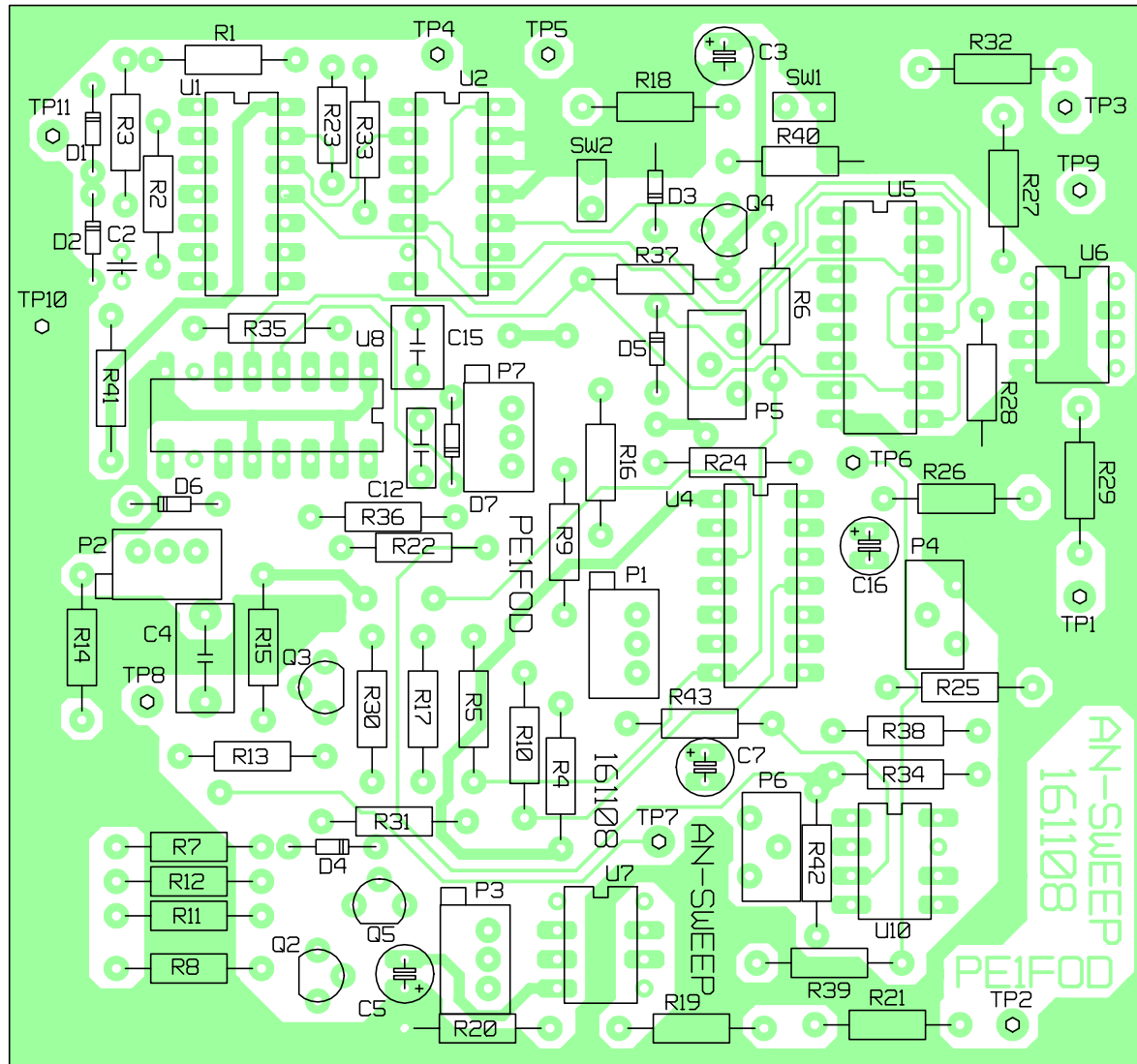
TP9=+30V

P5=Centr Frq.

TP6=-5V

P4=Sweep With
TP1=VT

P6=Marker Pos.



BOVENZIJDE

100X93mm

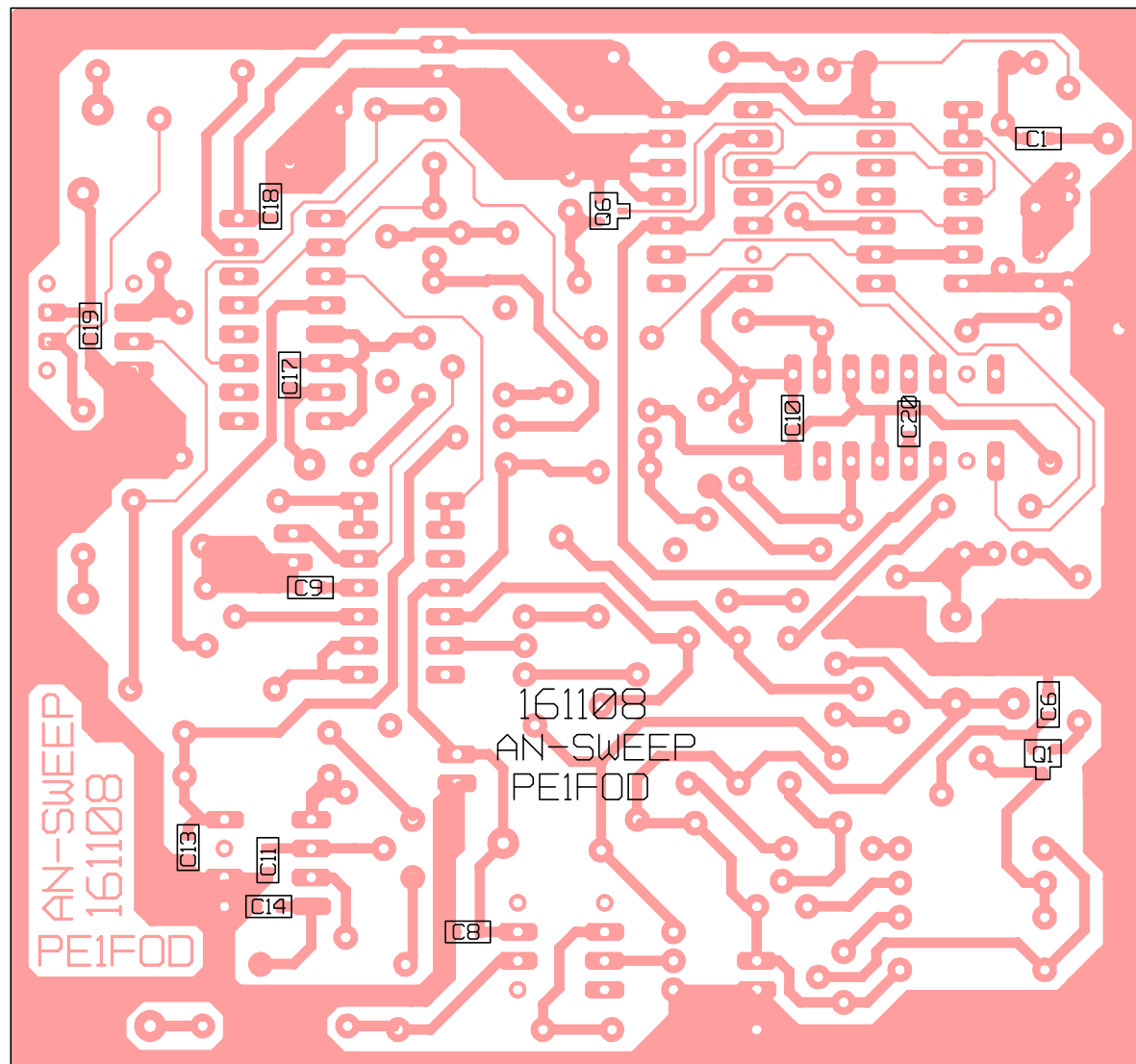
25 Nov 2008

TP7=+12V

TP2=X Hor out

Analyzer Sweep PCB

PE1F0D



ONDERZIJDE

Sweep Generator Analyzer

Revised: 1 Februari 2009, Revision: 1.32

Bill Of Materials 16 November 2008 14:49:00 Page 1

Item	Aantal	Reference	Part	In pakket?	Behuizing	Farnell nr	prijs/stuk	Totaal
1	12	C1,C6,C8,C9,C10,C11,C13, C14,C17,C18,C19,C20	100nF		SMD0805			
2	1	C2	10nF	FOD	2.5mm		--	
3	4	C3,C5,C7,C16	4u7	FOD	2.5mm		--	
4	1	C4	470nF	FOD	7.5mm		--	
5	1	C12	2n2	FOD	5mm		--	
6	1	C15	22nF	FOD	5mm		--	
7	4	D1,D2,D3,D7	BAT83	FOD	do34		--	
8	1	D4	5V1	FOD	do34		--	
9	2	D5,D6	13V	FOD	do34		--	
10	4	P1,P2,P3,P7	20k20T	FOD	10 slag pot		0.25	1.00
11	2	P4,P5	50k10T	FOD	10 slag pot		3.50	7.00
12	1	P6	50kp		1 slag pot			
13	1	Q1	MMBFJ310 6T	FOD	SOT-23		0.10	0.10
14	4	Q2,Q3,Q4,Q5	BC547	FOD	TO-92		0.10	0.40
15	1	Q6	2N7002 702	FOD	SOT-23		0.10	0.10
16	7	R1,R2,R5,R9,R10,R35,R41	100k		CR25			
17	5	R3,R11,R12,R25,R26	47k		CR25			
18	3	R4,R24,R27	33k		CR25			
19	11	R6,R7,R18,R19,R20,R22, R23,R37,R38,R39,R43	10k		CR25			
20	7	R8,R16,R17,R30,R31,R34, R40	2k2	FOD	CR25		--	
21	2	R13,R42	1M		CR25			
22	2	R14,R15	15k		CR25			
23	4	R21,R29,R32,R33	1k		CR25			
24	1	R28	3k9		CR25			
25	1	R36	68k		CR25			
26	1	SW1	50Hz Sync		Enkel polig			
27	1	SW2	Counter:		Enkel polig			
28	10	TP1,TP2,TP3,TP4,TP5,TP6, TP7,TP8,TP9,TP10	PIN1		Aansluiting			
29	1	TP11	AC 6V		Aansluiting			
30	1	U1	CD4093BCN	FOD	DIL-14	1014047	0.28	
31	1	U2	74VHC74N	FOD	DIL-14	1014128	0.20	
32	1	U4	TL074CN	FOD	DIL-14	9755934	0.31	
33	1	U5	HEF4053BP	FOD	DIL-16	385384	0.35	
34	1	U6	CA3140EZ	FOD	DIL-8	9663614	0.38	
35	1	U7	UA741CN	FOD	DIL-8	1094414	0.29	
36	1	U8	74HC4538N	FOD	DIL-16	381020	0.54	2.35
37	1	U10	LM393		DIL-8			
38	1	PCB	AN-Sweep	FOD	100x93mm		9.00	9.00
39	19	Doorvoer C	1nF	v. Dijken	soldeer		0.35	6.65
40	2	Stroken Blik 0.5mm	25 x 200mm					26.60

FOD= 19.95

Aansluitingen Sweep print Analyzer PE1F0D

- TP1 = VT to Tuner(1-28V)
- TP2 = X Horiesontaal uit maar Scoop(+/- 5V)
- TP3 = Blank-1 naar Counter Module
- TP4 = Blank-2 naar IF Module
- TP5 = +5V Power supply
- TP6 = -5V Power supply
- TP7 = +12V Power supply
- TP8 = -12V Power supply
- TP9 = +30V Power supply
- TP10 = GND / Blik rand
- TP11 = 15Vac in van trafo

- SW1 = 50Hz Sync aan/uit
- SW2 = Counter mode: Center/Marker

- P4 = Sweep Width 10T-Pot 50k
- P5 = Center Frequentie 10T-Pot 50k
- P6 = Marker positie 1-slag 50k