



BARCO nv
Communication Systems

Th. Sevenslaan 106

B-8500 Kortrijk

BELGIUM

Tel. +32 56 233 211

Fax +32 56 233 461

E-mail: support.bcs@barco.com

Web site: <http://www.barco.com>

UP-CONVERTER

SIRIUS

Technical Manual

Serial number:

Edition: May 17th, 2000

Part Number: V599064/00

Change without prior notice. The information in this manual is subject to change without prior notice.

Liability. BARCO shall not be liable for technical or editorial errors contained herein; nor for incidental or consequential damage resulting from the furnishing, performance or use of this manual.

Use of product names. The product names mentioned herein are used for identification purposes only, and may be trademarks and/or registered trademarks of their respective companies.

Copyright. © May, 2000 by BARCO Communication Systems.

All rights reserved. No part of this publication may be reproduced or distributed in any form or by any means without prior written permission of BARCO.

Table of contents

Table of contents	iii
Chapter 1 Technical Specifications	1-1
General Specifications.....	1-1
Inputs	1-1
IF Inputs	1-1
External Reference Carrier Input	1-1
Outputs.....	1-2
RF Output.....	1-2
IF Output	1-2
IF Testpoint	1-2
RF Testpoint.....	1-2
Remote Control	1-2
Typical Signal Specifications RF.....	1-2
Chapter 2 General Information	2-1
SIRIUS	2-1
SIRIUS RACK V9523320	2-1
SIRIUS UNIT DRIVER V9529635.....	2-1
SIRIUS UP-CON IF50B V9523301	2-1
SIRIUS UP-CON IF75B V9523302.....	2-1
SIRIUS UP-CON IF75F V9523300	2-1
Chapter 3 Parts List	3-1
Chapter 4 Schematic Diagrams	4-1

Chapter 1

Technical Specifications

General Specifications

Ambient temperature range	
Within specs	0 to 50 °C
Operation	5 to 45 °C
Storage	-20 to 80 °C
Powering	two floating –36 to –72 V inputs
Power consumption	20 W max per module
Dimensions	54 mmW x 177 mmH x 455 mmD 2.12"W x 7.0"H x 17.9"D
Weight	2.0 kg / 44.09 lbs

Inputs

IF Inputs

Connector	F-connector (standard)
Input impedance	75 Ω unbalanced (BNC and/or 50 Ω optional)
Return loss	> 18 dB
Input level	25 – 45 dBmV

External Reference Carrier Input

Connector	BNC
Impedance	high Z
Frequency	
HRC-IRC	6, 7, 8 or 10 MHz
FCC/HC	6.0003 or 10.0005 MHz
Input level	40 dBmV min. Automatic fall-back

Ouputs

RF Output

Connector	F-type
Impedance	75 Ω
Return loss	45 to 550 MHz > 13 dB 550 to 870 MHz > 11 dB
Frequency	Agile (45 MHz to 870 MHz) , step size 12.5 kHz
Output level	61 dBmV (\pm 1 dB) adjustable to 50 dBmV)

IF Output

Level	IF input level -4 dB
Impedance	75 Ω
Return loss	> 18 dB
Connector	F connector

IF Testpoint

Level	-20 dB \pm 0.5 dB
Impedance	75 Ω
Connector	F-connector

RF Testpoint

Level	-20 dB \pm 0.5 dB
Impedance	75 Ω
Connector	F-connector

Remote Control

Status & Control	3 pins screw terminal on quick-disconnect Plug connector TTL compatible I/O lines
------------------	--

Typical Signal Specifications RF

Amplitude response	$\leq \pm 0.3$ dB over entire channel (6-8 MHz)
Group delay response	≤ 15 ns pp over entire channel (6-8MHz)
Phase Noise	≤ -105 dBC / Hz @ 20 kHz ≤ -97 dBC / Hz @ 10 kHz ≤ -70 dBC / Hz @ 1 kHz ≤ -50 dBC / Hz @ 100 Hz
Harmonics and spurs	≥ -65 dB
CNR	

In Channel	BW 4 MHz	BW 8 MHz
± 2 MHz	≥ 73 dBc	≥ 70 dBc
± 12 MHz	≥ 77 dBc	≥ 74 dBc
± 100 MHz	≥ 80 dBc	≥ 77 dBc

TECHNICAL SPECIFICATIONS ARE SUBJECT TO CHANGE WITHOUT PRIOR NOTICE

Chapter 2

General Information

SIRIUS

SIRIUS RACK

V9523320

<i>Ordernumber</i>	<i>Description</i>	<i>Index</i>
V5653201	BACKBOARD RACK SIRIUS	00
V5653460	ASSEMBLY RACK SIRIUS	00
V5653465	ACC-SET RACK SIRIUS	00
V5653268	BOXKIT RACK SIRIUS	00
V5900543	LBL RACK SIRIUS	00

SIRIUS UNIT DRIVER

V9529635

SIRIUS UP-CON IF50B

V9523301

<i>Ordernumber</i>	<i>Description</i>	<i>Index</i>
V5653471	MAINBOARD (IF50) SIRIUS	00
V5653480	FRONT SIRIUS	00
V5653227	CONVERTOR SIRIUS	01
V5653495	ACC-SET SIRIUS	01
V5653490	ASSEMBLY SIRIUS	00
V5653267	BOXKIT SIRIUS	00
V599041	UM SIRIUS	00
V5900542	LBL -48V ORION/SIRIUS	00

SIRIUS UP-CON IF75B

V9523302

Same as SIRIUS UP-CON IF 75F

SIRIUS UP-CON IF75F

V9523300

<i>Ordernumber</i>	<i>Description</i>	<i>Index</i>
V5653470	MAINBOARD (IF75) SIRIUS	01
V5653480	FRONT SIRIUS	00
V5653227	CONVERTOR SIRIUS	01
V5653495	ACC-SET SIRIUS	01
V5653490	ASSEMBLY SIRIUS	00
V5653267	BOXKIT SIRIUS	00
V599041	UM SIRIUS	00
V5900542	LBL -48V ORION/SIRIUS	00

Chapter 3

Parts List

V5653471	MAINBOARD (IF50) SIRIUS
V5653470	MAINBOARD (IF75) SIRIUS
V5653480	FRONT SIRIUS
V5653227	CONVERTOR SIRIUS
V5653495	ACC-SET SIRIUS
V5653490	ASSEMBLY SIRIUS
V5653267	BOXKIT SIRIUS
V5653201	BACKBOARD RACK SIRIUS

PARTLIST

SIRIUS

Item	Order No.	Description	Item	Order No.	Description	Item	Order No.	Description
	V5653471	MAINBOARD (IF50) SIRIUS					V5653470	MAINBOARD (IF75) SIRIUS
C 32	V1114778	C EL RA 100M M 25E1 LE	L 1	V306100	CH BEAD 600E 50 MHZ	C 32	V1114778	C EL RA 100M M 25E1 LE
C 33	V1114778	C EL RA 100M M 25E1 LE	L 2	V3060492	CH RA NS 100 UH 0A91	C 33	V1114778	C EL RA 100M M 25E1 LE
C 41	V1114778	C EL RA 100M M 25E1 LE	L 3	V306100	CH BEAD 600E 50 MHZ	C 41	V1114778	C EL RA 100M M 25E1 LE
C 42	V111478	C EL RA 220M M 25E2 105	L 4	V306100	CH BEAD 600E 50 MHZ	C 42	V111478	C EL RA 220M M 25E2 105
C 43	V1114881	C EL RA 220M M 50E2 105	L 5	V306100	CH BEAD 600E 50 MHZ	C 43	V1114881	C EL RA 220M M 50E2 105
C 44	V111478	C EL RA 220M M 25E2 105	L 6	V306100	CH BEAD 600E 50 MHZ	C 44	V111478	C EL RA 220M M 25E2 105
C 45	V111478	C EL RA 220M M 25E2 105	L 7	A575214	CH MNS 17 UH 2A AX NS	C 45	V111478	C EL RA 220M M 25E2 105
C 51	V111478	C EL RA 220M M 25E2 105	L 8	A575214	CH MNS 17 UH 2A AX NS	C 51	V111478	C EL RA 220M M 25E2 105
C 52	V1114881	C EL RA 220M M 50E2 105	L 9	A575214	CH MNS 17 UH 2A AX NS	C 52	V1114881	C EL RA 220M M 50E2 105
C 53	V111478	C EL RA 220M M 25E2 105	L 10	A575214	CH MNS 17 UH 2A AX NS	C 53	V111478	C EL RA 220M M 25E2 105
C 56	V111478	C EL RA 220M M 25E2 105	L 25	A575214	CH MNS 17 UH 2A AX NS	C 56	V111478	C EL RA 220M M 25E2 105
C 63	V1114908	C EL RA 330M M 35E2 LE	L 27	V306244	CH MNS 1,1MHX2 2A V	C 63	V1114908	C EL RA 330M M 35E2 LE
C 64	V1114908	C EL RA 330M M 35E2 LE	PCB1	V680391	SMD MAINBOARD SIRIUS	C 64	V1114908	C EL RA 330M M 35E2 LE
C 74	V1114908	C EL RA 330M M 35E2 LE	Q 11	V132604	Q IRF640 FN P TO220	C 74	V1114908	C EL RA 330M M 35E2 LE
C 75	V1114908	C EL RA 330M M 35E2 LE	Q 13	V132621	Q IRF9530 FP P TO220	C 75	V1114908	C EL RA 330M M 35E2 LE
C 94	V1140426	C POMERA 100N K250E2 85	R 71	V102935	R MF H820E J 2W E7	C 94	V1140426	C POMERA 100N K250E2 85
C100	V1140426	C POMERA 100N K250E2 85	RL 1	B3244299	RLY 48V 2C BH DIP M UL	C100	V1140426	C POMERA 100N K250E2 85
C120	V1114968	C EL RA 47M M 63E2 LE	R160	V1026177	R MF H 15K F 0W6 E4	C120	V1114968	C EL RA 47M M 63E2 LE
C122	V1140426	C POMERA 100N K250E2 85	R179	V101511	R MF H 8E2 F 0W4 E3	C122	V1140426	C POMERA 100N K250E2 85
C133	V1113908	C EL RA 220M M100E3 LE	R194	V101524	R MF H100E F 0W4 E3	C133	V1113908	C EL RA 220M M100E3 LE
C134	V1113908	C EL RA 220M M100E3 LE	R195	V101521	R MF H 56E F 0W4 E3	C134	V1113908	C EL RA 220M M100E3 LE
C139	V1140426	C POMERA 100N K250E2 85	R213	V101528	R MF H220E F 0W4 E3	C139	V1140426	C POMERA 100N K250E2 85
C140	V1140426	C POMERA 100N K250E2 85	R214	V101516	R MF H 22E F 0W4 E3	C140	V1140426	C POMERA 100N K250E2 85
C141	V1140426	C POMERA 100N K250E2 85	R215	V101528	R MF H220E F 0W4 E3	C141	V1140426	C POMERA 100N K250E2 85
C147	V1140542	C POMERA 1M K100E6 85	R245	V101533	R MF H560E F 0W4 E3	C147	V1140542	C POMERA 1M K100E6 85
C154	V1116802	C EL BRA 10M M 63E1 105	R246	V101533	R MF H560E F 0W4 E3	C154	V1116802	C EL BRA 10M M 63E1 105
C160	V1140542	C POMERA 1M K100E6 85	R248	V101500	R MF H 1E F 0W4 E3	C160	V1140542	C POMERA 1M K100E6 85
C161	V1140542	C POMERA 1M K100E6 85	R249	V101500	R MF H 1E F 0W4 E3	C161	V1140542	C POMERA 1M K100E6 85
C203	V117036	C TH 2 -18P 300	T 1	V7754472	T RM10 P12 ORION	C203	V117036	C TH 2 -18P 300
C215	A552450	C POMERA 100N K100E2 85	VDR1	V105133	R VDRR 300V 1200A	C215	A552450	C POMERA 100N K100E2 85
C216	A552450	C POMERA 100N K100E2 85	VDR2	V105133	R VDRR 300V 1200A	C216	A552450	C POMERA 100N K100E2 85
C217	A552450	C POMERA 100N K100E2 85	VDR3	V105133	R VDRR 300V 1200A	C217	A552450	C POMERA 100N K100E2 85
C218	A552450	C POMERA 100N K100E2 85	VDR4	V105133	R VDRR 300V 1200A	C218	A552450	C POMERA 100N K100E2 85
C219	A552450	C POMERA 100N K100E2 85	VDR5	V105133	R VDRR 300V 1200A	C219	A552450	C POMERA 100N K100E2 85
C220	A552450	C POMERA 100N K100E2 85	VDR6	V105133	R VDRR 300V 1200A	C220	A552450	C POMERA 100N K100E2 85
C221	A552450	C POMERA 100N K100E2 85	XT 2	V3068201	X 10M000000 30 HC49	C221	A552450	C POMERA 100N K100E2 85
C222	A552450	C POMERA 100N K100E2 85	Z 2	A573570	D ZEN 15V 1W3 C DO41	C222	A552450	C POMERA 100N K100E2 85
D 27	V1319551	D BYV79E-200 UFSR TO220	Z 3	V131779	D ZEN 15V 1W C DO41	D 27	V1319551	D BYV79E-200 UFSR TO220
D 28	V1319551	D BYV79E-200 UFSR TO220	Z 4	A573570	D ZEN 15V 1W3 C DO41	D 28	V1319551	D BYV79E-200 UFSR TO220
D 29	V1319551	D BYV79E-200 UFSR TO220	10	C314101	F 5X20 T 1A L UL	D 29	V1319551	D BYV79E-200 UFSR TO220
D 53	V131960	D BYV34-500 UFSR TO220	20	Z348200	SLVU GLCL OIL D 1,5RD 10	D 53	V131960	D BYV34-500 UFSR TO220
D 54	V131960	D BYV34-500 UFSR TO220	30	V362121	SCR D7985 M 3 X 6 STZN	D 54	V131960	D BYV34-500 UFSR TO220
HS 1	V133089	HTSN Q TO220 22X 6 L 31	35	R367502	SPR D6798AD 3,2D 6 STZN	HS 1	V133089	HTSN Q TO220 22X 6 L 31
I 14	V131692	U 82A CNX DIP6 P	40	R366102	NUT D934 M 3 STZN	I 14	V131692	U 82A CNX DIP6 P
I 16	V131692	U 82A CNX DIP6 P	50	V322056	FAN AX 12V 3LS 25DB S 40	I 16	V131692	U 82A CNX DIP6 P
I 25	V131692	U 82A CNX DIP6 P	51	R362127	SCR D7985 M 3 X 20 STZN	I 25	V131692	U 82A CNX DIP6 P
I 31	R134019	U 7808 TO220 P	52	Z314002	J CT C FWT P 2 M2SN	I 31	R134019	U 7808 TO220 P
J 1	B3367052	J MMT FBS P20 E1SN	1000	V605327	BOX ASSEMBLY SIRIUS	J 1	B3367052	J MMT FBS P20 E1SN
J 5	V3137822	J CT H MBT P12 M2SN WH	1002	R361912	SCR D965 M 3 X 6 STZN	J 5	V3137822	J CT H MBT P12 M2SN WH
J 6	V3137822	J CT H MBT P12 M2SN WH	1005	V6053360	CONNECTOR PANEL SIRIUS	J 6	V3137822	J CT H MBT P12 M2SN WH
J 7	V3137820	J CT H MBT P10 M2SN WH	1007	B361306	SCR CUST_SM 3 X 6 STZB	J 7	V3137820	J CT H MBT P10 M2SN WH
J 8	B332105	J TMP FBA 45° 50/75SJ	1008	V3673906	SPR BS4463D 3,2D 6,4 SS	J 8	B332105	J TMP FBA 45° 50/75SJ
J 9	B3321051	J TMP FBA 20° 50/75SJ	1010	V6053365	SHIELDING MAINBRD SIRIUS	J 9	B3321051	J TMP FBA 20° 50/75SJ
J 11	V314501	F A HLD 6A3 5X20 BC	1015	V3621212	SCR Z7985 M 3 X 6 STZN	J 11	V314501	F A HLD 6A3 5X20 BC
J 12	V314501	F A HLD 6A3 5X20 BC	1020	V367650	NUT TRAD M 3 HOOK STNI	J 12	V314501	F A HLD 6A3 5X20 BC
J 13	B332105	J TMP FBA 45° 50/75SJ	1025	V3621212	SCR Z7985 M 3 X 6 STZN	J 13	B332105	J TMP FBA 45° 50/75SJ
J 14	B332105	J TMP FBA 45° 50/75SJ	2000	B332101	J BNC CR FWT C2,6 50E BHR	J 14	B332105	J TMP FBA 45° 50/75SJ
J 15	B332105	J TMP FBA 45° 50/75SJ	2002	B332102	J BNC CC FWT C2,6 75E BHR	J 15	B332105	J TMP FBA 45° 50/75SJ
J 16	V314501	F A HLD 6A3 5X20 BC	2005	B337303	J MCX CR MWS C1,8 75E AP	J 16	V314501	F A HLD 6A3 5X20 BC
J 17	V314501	F A HLD 6A3 5X20 BC	2010	B332103	J TMP CR MWT C3,2 50/75SP	J 17	V314501	F A HLD 6A3 5X20 BC
J 18	V3137812	J CT H MBT P 2 M2SN WH	2200	Z3430341	CBL COA RGD179 75E 2SHLD	J 18	V3137812	J CT H MBT P 2 M2SN WH
J 19	B338605	J*HM5CS FBS P55 M2C2 1,6	2210	V343024	CBL COA RG179BU 75E	J 19	B338605	J*HM5CS FBS P55 M2C2 1,6
J 20	B3313620	J BLK1 MBS P 3 E1,5C	2220	V343031	CBL COA RG316 U 50E	J 20	B3313620	J BLK1 MBS P 3 E1,5C
J 21	V3131437	J BNC PM FBS C 75E MP	2500	V3484129	CD CT FTFT P12 60	J 21	V3131437	J BNC PM FBS C 75E MP

PARTLIST

SIRIUS

Item	Order No.	Description	Item	Order No.	Description	Item	Order No.	Description
			<u>V680391</u>		<u>SMD MAINBOARD SIRIUS</u>			
L 1	V306100	CH BEAD 600E 50 MHZ	2210	V343024	CBL COA RG179BU 75E	C 80	P2100410	C# X7R MU 10N K 50 0805
L 2	V3060492	CH RA NS 100 UH 0A91	2500	V3484129	CD CT FTFT P12 60	C 81	P2100410	C# X7R MU 10N K 50 0805
L 3	V306100	CH BEAD 600E 50 MHZ	C 1	P2101240	C# X7R MU 100N K 50 0805	C 82	P2100410	C# X7R MU 10N K 50 0805
L 4	V306100	CH BEAD 600E 50 MHZ	C 2	P2101240	C# X7R MU 100N K 50 0805	C 83	P2100810	C# COG MU 180P J 50 0805
L 5	V306100	CH BEAD 600E 50 MHZ	C 3	P212005	C# TA 47M M 10 7343	C 87	P2100410	C# X7R MU 10N K 50 0805
L 6	V306100	CH BEAD 600E 50 MHZ	C 4	P2100170	C# COG MU 22P J 50 0805	C 88	P2100410	C# X7R MU 10N K 50 0805
L 7	A575214	CH MNS 17 UH 2A AX NS	C 5	P2100170	C# COG MU 22P J 50 0805	C 89	P2100410	C# X7R MU 10N K 50 0805
L 8	A575214	CH MNS 17 UH 2A AX NS	C 6	P2100170	C# COG MU 22P J 50 0805	C 92	P2101820	C# COG MU 12P J 50 0805
L 9	A575214	CH MNS 17 UH 2A AX NS	C 7	P2100170	C# COG MU 22P J 50 0805	C 93	P2100410	C# X7R MU 100N K 50 0805
L 10	A575214	CH MNS 17 UH 2A AX NS	C 8	P2100170	C# COG MU 22P J 50 0805	C 95	P2100410	C# X7R MU 10N K 50 0805
L 25	A575214	CH MNS 17 UH 2A AX NS	C 9	P2100170	C# COG MU 22P J 50 0805	C 96	P2100170	C# COG MU 22P J 50 0805
L 27	V306244	CH MNS 1,1MHX2 2A V	C 10	P2100170	C# COG MU 22P J 50 0805	C 97	P2100350	C# X7R MU 1N K 50 0805
PCB1	V680391	SMD MAINBOARD SIRIUS	C 11	P2100170	C# COG MU 22P J 50 0805	C 98	P2101240	C# X7R MU 100N K 50 0805
Q 11	V132604	Q IRF640 FN P TO220	C 12	P2100170	C# COG MU 22P J 50 0805	C 99	P2101240	C# X7R MU 100N K 50 0805
Q 13	V132621	Q IRF9530 FP P TO220	C 13	P2100170	C# COG MU 22P J 50 0805	C 101	P2100410	C# X7R MU 10N K 50 0805
R 71	V102935	R MF H820E J 2W E7	C 14	P2100170	C# COG MU 22P J 50 0805	C 102	P2101220	C# X7R MU 100N K 50 1206
RL 1	B3244299	RLY 48V 2C BH DIP M UL	C 15	P2100170	C# COG MU 22P J 50 0805	C 103	P2101240	C# X7R MU 100N K 50 0805
R160	V1026177	R MF H 15K F 0W6 E4	C 16	P2100170	C# COG MU 22P J 50 0805	C 104	P2101240	C# X7R MU 100N K 50 0805
R179	V101513	R MF H 12E F 0W4 E3	C 17	P2101240	C# X7R MU 100N K 50 0805	C 105	P2101240	C# X7R MU 100N K 50 0805
R194	V101526	R MF H150E F 0W4 E3	C 18	P2100190	C# COG MU 47P J 50 0805	C 106	P2100240	C# COG MU 330P J 50 0805
R195	V1015231	R MF H 75E F 0W4 E3	C 19	P2100190	C# COG MU 47P J 50 0805	C 107	P2100240	C# COG MU 330P J 50 0805
R213	V101531	R MF H390E F 0W4 E3	C 20	P2100190	C# COG MU 47P J 50 0805	C 108	P2100360	C# X7R MU 1N5K 50 0805
R214	V101518	R MF H 33E F 0W4 E3	C 21	P2100190	C# COG MU 47P J 50 0805	C 109	P2100410	C# X7R MU 10N K 50 0805
R215	V101531	R MF H390E F 0W4 E3	C 22	P210018	C# COG MU 33P J 50 0805	C 110	P2100410	C# X7R MU 10N K 50 0805
R245	V101535	R MF H820E F 0W4 E3	C 23	P210018	C# COG MU 33P J 50 0805	C 111	P2101910	C# X7R MU 1M K 50 2220
R246	V101535	R MF H820E F 0W4 E3	C 24	P213506	C# EL RA 100M M 16 LE	C 112	P2101240	C# X7R MU 100N K 50 0805
R248	V101500	R MF H 1E F 0W4 E3	C 25	P2101240	C# X7R MU 100N K 50 0805	C 113	P2102100	C# COG MU 220P J200 1206
R249	V101500	R MF H 1E F 0W4 E3	C 26	P2101240	C# X7R MU 100N K 50 0805	C 114	P2100410	C# X7R MU 10N K 50 0805
T 1	V7754472	TRM10 P12 ORION	C 27	P2100190	C# COG MU 47P J 50 0805	C 115	P2100410	C# X7R MU 10N K 50 0805
VDR1	V105133	R VDRR 300V 1200A	C 28	P2100190	C# COG MU 47P J 50 0805	C 116	P2101220	C# X7R MU 100N K 50 1206
VDR2	V105133	R VDRR 300V 1200A	C 29	P2101240	C# X7R MU 100N K 50 0805	C 117	P2100200	C# COG MU 68P J 50 0805
VDR3	V105133	R VDRR 300V 1200A	C 30	P2101240	C# X7R MU 100N K 50 0805	C 118	P2101240	C# X7R MU 100N K 50 0805
VDR4	V105133	R VDRR 300V 1200A	C 31	P2100170	C# COG MU 22P J 50 0805	C 119	P2101240	C# X7R MU 100N K 50 0805
VDR5	V105133	R VDRR 300V 1200A	C 34	P2101240	C# X7R MU 100N K 50 0805	C 121	P210211	C# X7R MU 4N7K200 1206
VDR6	V105133	R VDRR 300V 1200A	C 35	P2101240	C# X7R MU 100N K 50 0805	C 123	P2100410	C# X7R MU 10N K 50 0805
XT 2	V3068201	X 10M000000 30 HC49	C 36	P2101240	C# X7R MU 100N K 50 0805	C 124	P2101240	C# X7R MU 100N K 50 0805
Z 2	A573570	D ZEN 15V 1W3 C DO41	C 37	P2100410	C# X7R MU 10N K 50 0805	C 125	P2101240	C# X7R MU 100N K 50 0805
Z 3	V131779	D ZEN 15V 1W C DO41	C 38	P2101240	C# X7R MU 100N K 50 0805	C 126	P2100410	C# X7R MU 10N K 50 0805
Z 4	A573570	D ZEN 15V 1W3 C DO41	C 39	P2101240	C# X7R MU 100N K 50 0805	C 127	P2100410	C# X7R MU 10N K 50 0805
10	C314101	F 5X20 T 1A L UL	C 40	P2101240	C# X7R MU 100N K 50 0805	C 128	P2100410	C# X7R MU 10N K 50 0805
20	Z348200	SLVU GLCL OIL D 1,5RD 10	C 46	P2101240	C# X7R MU 100N K 50 0805	C 129	P2100410	C# X7R MU 10N K 50 0805
30	V362121	SCR D7985 M 3 X 6 STZN	C 47	P2101240	C# X7R MU 100N K 50 0805	C 130	P2100410	C# X7R MU 10N K 50 0805
35	R367502	SPR D6798AD 3,2D 6 STZN	C 48	P2101240	C# X7R MU 100N K 50 0805	C 131	P2100410	C# X7R MU 10N K 50 0805
40	R366102	NUT D934 M 3 STZN	C 49	P2101240	C# X7R MU 100N K 50 0805	C 132	P2101240	C# X7R MU 100N K 50 0805
50	V322056	FAN AX 12V 3LS 25DB S 40	C 50	P2101240	C# X7R MU 100N K 50 0805	C 135	P212046	C# TA 10M M 25 6032
51	R362127	SCR D7985 M 3 X 20 STZN	C 54	P2101240	C# X7R MU 100N K 50 0805	C 137	P2100410	C# X7R MU 10N K 50 0805
52	Z314002	J CT C FWT P 2 M2SN	C 55	P2101240	C# X7R MU 100N K 50 0805	C 138	P2101240	C# X7R MU 100N K 50 0805
1000	V605327	BOX ASSEMBLY SIRIUS	C 57	P2101240	C# X7R MU 100N K 50 0805	C 142	P2101240	C# X7R MU 100N K 50 0805
1002	R361912	SCR D965 M 3 X 6 STZN	C 58	P2101240	C# X7R MU 100N K 50 0805	C 143	P2101240	C# X7R MU 100N K 50 0805
1005	V6053360	CONNECTOR PANEL SIRIUS	C 59	P210022	C# COG MU 150P J 50 0805	C 144	P2100410	C# X7R MU 10N K 50 0805
1007	B361306	SCR CUST_SM 3 X 6 STZB	C 60	P210022	C# COG MU 150P J 50 0805	C 145	P2101240	C# X7R MU 100N K 50 0805
1008	V3673906	SPR BS4463D 3,2D 6,4 SS	C 61	P210022	C# COG MU 150P J 50 0805	C 146	P2101240	C# X7R MU 100N K 50 0805
1010	V6053365	SHIELDING MAINBRD SIRIUS	C 62	P210022	C# COG MU 150P J 50 0805	C 149	P2100410	C# X7R MU 10N K 50 0805
1015	V362121	SCR D7985 M 3 X 6 STZN	C 65	P2100410	C# X7R MU 10N K 50 0805	C 150	P2100410	C# X7R MU 10N K 50 0805
1020	V367650	NUT TRAD M 3 HOOK STNI	C 66	P2100410	C# X7R MU 10N K 50 0805	C 151	P2100410	C# X7R MU 10N K 50 0805
1021	V3685408	I NUT ST M3 PCB SS	C 68	P2101160	C# COG MU 27P J 50 0805	C 152	P2100410	C# X7R MU 10N K 50 0805
1025	V3621212	SCR Z7985 M 3 X 6 STZN	C 69	P2100900	C# COG MU 56P J 50 0805	C 153	P2100410	C# X7R MU 10N K 50 0805
2000	B332148	J F FWT P 1 SN 1FS	C 71	P2101150	C# COG MU 6P8D 50 0805	C 156	P2100410	C# X7R MU 10N K 50 0805
2001	V3131681	J F A NUT 3/8-32	C 72	P2100160	C# COG MU 15P J 50 0805	C 172	P2101240	C# X7R MU 100N K 50 0805
2001	V3131682	J F A WASHER	C 73	P2100410	C# X7R MU 10N K 50 0805	C 173	P2101240	C# X7R MU 100N K 50 0805
2005	B337303	J MCX CR MWS C1,8 75E AP	C 76	P2101160	C# COG MU 27P J 50 0805	C 174	P2100410	C# X7R MU 10N K 50 0805
2010	B332103	J TMP CR MWT C3,2 50/75SP	C 78	P2100810	C# COG MU 180P J 50 0805	C 175	P2101350	C# COG MU 8P2D 50 0805
2200	Z3430341	CBL COA RGD179 75E 2SHLD	C 79	P2101150	C# COG MU 6P8D 50 0805	C 178	P2101240	C# X7R MU 100N K 50 0805

PARTLIST

SIRIUS

Item	Order No.	Description	Item	Order No.	Description	Item	Order No.	Description
C179	P2101240	C# X7R MU 100N K 50 0805	D 30	P234197	D#R BYD77D 2002A0 SOD87	Q 3	P232067	Q#BC857C P SS SOT23
C180	P2101240	C# X7R MU 100N K 50 0805	D 31	P234002	D#Y BAT17 004030 SOT23	Q 4	P232104	Q#BC847C N SS SOT23
C181	P2101240	C# X7R MU 100N K 50 0805	D 32	P234197	D#R BYD77D 2002A0 SOD87	Q 5	P232130	Q#BF799 N SS SOT23
C182	P2101240	C# X7R MU 100N K 50 0805	D 33	P234075	D#BA679 PIN DMMELF	Q 6	P232130	Q#BF799 N SS SOT23
C183	P2100410	C# X7R MU 10N K 50 0805	D 34	P234075	D#BA679 PIN DMMELF	Q 7	P232067	Q#BC857C P SS SOT23
C184	P2100410	C# X7R MU 10N K 50 0805	D 35	P234197	D#R BYD77D 2002A0 SOD87	Q 8	P232104	Q#BC847C N SS SOT23
C186	P2101240	C# X7R MU 100N K 50 0805	D 36	P234075	D#BA679 PIN DMMELF	Q 9	P232104	Q#BC847C N SS SOT23
C187	P2101240	C# X7R MU 100N K 50 0805	D 37	P234075	D#BA679 PIN DMMELF	Q 10	P232104	Q#BC847C N SS SOT23
C188	P2101240	C# X7R MU 100N K 50 0805	D 38	P234056	D#R 4002 1001A0 DMELF	Q 12	P232104	Q#BC847C N SS SOT23
C189	P2101240	C# X7R MU 100N K 50 0805	D 39	P234216	D#R SM4007 1021A0 DMELF	Q 14	P232104	Q#BC847C N SS SOT23
C190	P213506	C# EL RA 100M M 16 LE	D 40	P234075	D#BA679 PIN DMMELF	Q 16	P232062	Q#BF622 N SS SOT89
C191	P2100200	C# COG MU 68P J 50 0805	D 41	P234075	D#BA679 PIN DMMELF	Q 18	P232130	Q#BF799 N SS SOT23
C192	P2101240	C# X7R MU 100N K 50 0805	D 44	P234216	D#R SM4007 1021A0 DMELF	Q 19	P232092	Q#BF623 P SS SOT89
C193	P2100170	C# COG MU 22P J 50 0805	D 52	P234099	D#4148 R DMMELF	Q 20	P232130	Q#BF799 N SS SOT23
C194	P2100410	C# X7R MU 10N K 50 0805	D 55	P234099	D#4148 R DMMELF	Q 21	P232168	Q#SST310 F SS SOT23
C195	P2101240	C# X7R MU 100N K 50 0805	D 56	P234099	D#4148 R DMMELF	Q 22	P232067	Q#BC857C P SS SOT23
C196	P2101240	C# X7R MU 100N K 50 0805	D 57	P234099	D#4148 R DMMELF	Q 23	P232130	Q#BF799 N SS SOT23
C197	P2101240	C# X7R MU 100N K 50 0805	D 58	P234099	D#4148 R DMMELF	Q 24	P232067	Q#BC857C P SS SOT23
C198	P2101240	C# X7R MU 100N K 50 0805	D 59	P234099	D#4148 R DMMELF	R 1	P201111	R# CE H 10K F 0W12 0805
C199	P2101240	C# X7R MU 100N K 50 0805	D 60	P234003	D#Y BAS40-04 40120 SOT23	R 2	P201055	R# CE H 47E F 0W12 0805
C200	P213506	C# EL RA 100M M 16 LE	D 61	P234216	D#R SM4007 1021A0 DMELF	R 3	P201055	R# CE H 47E F 0W12 0805
C201	P2101240	C# X7R MU 100N K 50 0805	D 62	P234003	D#Y BAS40-04 40120 SOT23	R 4	P201055	R# CE H 47E F 0W12 0805
C202	P2101820	C# COG MU 12P J 50 0805	D 63	P234003	D#Y BAS40-04 40120 SOT23	R 5	P201055	R# CE H 47E F 0W12 0805
C204	P2101240	C# X7R MU 100N K 50 0805	I 1	P231102	U#7705B TL SO8 P	R 6	P201055	R# CE H 47E F 0W12 0805
C205	P2101240	C# X7R MU 100N K 50 0805	I 2	P238241	U#S 7032 I5 P4337824	R 7	P201055	R# CE H 47E F 0W12 0805
C206	P2101240	C# X7R MU 100N K 50 0805	I 3	P230372	U#80C32 12PLCC44 P	R 8	P201055	R# CE H 47E F 0W12 0805
C207	P2101240	C# X7R MU 100N K 50 0805	I 4	P230772	U#24C16 SO8 P	R 9	P201055	R# CE H 47E F 0W12 0805
C208	P212018	C# TA 10M M 16 6032	I 5	P230427	U#74HCT573 SOL20 I	R 10	P201055	R# CE H 47E F 0W12 0805
C209	P2101240	C# X7R MU 100N K 50 0805	I 6	P236014	U#2672M LM SO8 I	R 11	P201055	R# CE H 47E F 0W12 0805
C210	P2101240	C# X7R MU 100N K 50 0805	I 7	P238315	U#S 29F040 I7 V680391	R 12	P201055	R# CE H 47E F 0W12 0805
C211	P2101240	C# X7R MU 100N K 50 0805	I 8	P231551	U#75CIM-5 LM SO8 I	R 13	P201055	R# CE H 47E F 0W12 0805
C212	P212027	C# TA 10M M 25 7343	I 9	P231268	U#SRAM 32KX8 15SQJ28 P	R 14	P201055	R# CE H 47E F 0W12 0805
C213	P2101240	C# X7R MU 100N K 50 0805	I 10	P230936	U#8444A TDA SOL20 P	R 15	P201085	R# CE H820E F 0W12 0805
C214	P2101240	C# X7R MU 100N K 50 0805	I 11	P230911	U#8574A PCF SOL16 P	R 16	P201103	R# CE H 4K7 F 0W12 0805
C223	P2100190	C# COG MU 47P J 50 0805	I 12	P230542	U#8591 PCF SOL16 P	R 17	P201103	R# CE H 4K7 F 0W12 0805
C224	P2100190	C# COG MU 47P J 50 0805	I 13	P231572	U#491 MAX SO14 P	R 18	P201111	R# CE H 10K F 0W12 0805
C225	P2100190	C# COG MU 47P J 50 0805	I 15	P231415	RF#AMPL MAV- 11SM	R 19	P201105	R# CE H 5K6 F 0W12 0805
C226	P2100190	C# COG MU 47P J 50 0805	I 17	P231810	U#3844 UC SO14 P	R 20	P201111	R# CE H 10K F 0W12 0805
C227	P2101240	C# X7R MU 100N K 50 0805	I 18	P230026	U#358 LM SO8 P	R 21	P201111	R# CE H 10K F 0W12 0805
D 1	P234003	D#Y BAS40-04 40120 SOT23	I 19	P231415	RF#AMPL MAV- 11SM	R 22	P201063	R# CE H100E F 0W12 0805
D 2	P234003	D#Y BAS40-04 40120 SOT23	I 20	P230026	U#358 LM SO8 P	R 23	P201063	R# CE H100E F 0W12 0805
D 3	P234003	D#Y BAS40-04 40120 SOT23	I 21	P230030	U#4053 SO16 I	R 24	P201105	R# CE H 5K6 F 0W12 0805
D 4	P234003	D#Y BAS40-04 40120 SOT23	I 22	P231415	RF#AMPL MAV- 11SM	R 25	P201105	R# CE H 5K6 F 0W12 0805
D 5	P234003	D#Y BAS40-04 40120 SOT23	I 23	P230026	U#358 LM SO8 P	R 26	P201063	R# CE H100E F 0W12 0805
D 6	P234003	D#Y BAS40-04 40120 SOT23	I 24	P231085	U#78L05AB MC SO8 I	R 27	P201105	R# CE H 5K6 F 0W12 0805
D 7	P234003	D#Y BAS40-04 40120 SOT23	I 27	P250540	CH# SPLITTER	R 28	P201105	R# CE H 5K6 F 0W12 0805
D 8	P234003	D#Y BAS40-04 40120 SOT23	I 28	P230026	U#358 LM SO8 P	R 29	P201063	R# CE H100E F 0W12 0805
D 9	P234003	D#Y BAS40-04 40120 SOT23	I 29	P250542	T# DIR COUPLER 75E 15DB	R 30	P201063	R# CE H100E F 0W12 0805
D 10	P234003	D#Y BAS40-04 40120 SOT23	I 30	P231224	U#810A AD SO8 I	R 31	P201063	R# CE H100E F 0W12 0805
D 11	P234003	D#Y BAS40-04 40120 SOT23	I 32	P230026	U#358 LM SO8 P	R 32	P201105	R# CE H 5K6 F 0W12 0805
D 12	P234003	D#Y BAS40-04 40120 SOT23	L 12	P250666	CH# 0.33UH G 1008	R 33	P201105	R# CE H 5K6 F 0W12 0805
D 13	P234003	D#Y BAS40-04 40120 SOT23	L 13	P250536	CH# 680 NH K 1210	R 34	P201111	R# CE H 10K F 0W12 0805
D 14	P234003	D#Y BAS40-04 40120 SOT23	L 14	P250666	CH# 0.33UH G 1008	R 35	P201111	R# CE H 10K F 0W12 0805
D 15	P234003	D#Y BAS40-04 40120 SOT23	L 16	P250534	CH# 0.56UH K 1008	R 36	P201089	R# CE H 1K2 F 0W12 0805
D 16	P234003	D#Y BAS40-04 40120 SOT23	L 17	P250001	CH# 10 UH K 1210	R 37	P201091	R# CE H 1K5 F 0W12 0805
D 17	P234003	D#Y BAS40-04 40120 SOT23	L 19	P250521	CH# 47 UH K 1812	R 38	P201096	R# CE H 2K4 F 0W12 0805
D 18	P234003	D#Y BAS40-04 40120 SOT23	L 20	P250001	CH# 10 UH K 1210	R 39	P201111	R# CE H 10K F 0W12 0805
D 19	P234003	D#Y BAS40-04 40120 SOT23	L 21	P250664	CH# 0.22UH G 1008	R 40	P201087	R# CE H 1K F 0W12 0805
D 20	P234055	D#Y BAT54 030200 SOT23	L 22	P250001	CH# 10 UH K 1210	R 41	P201087	R# CE H 1K F 0W12 0805
D 21	P234328	D#R MBRS340 0403A0 SOD14	L 23	P250001	CH# 10 UH K 1210	R 42	P201111	R# CE H 10K F 0W12 0805
D 22	P234003	D#Y BAS40-04 40120 SOT23	L 24	P250001	CH# 10 UH K 1210	R 43	P201135	R# CE H100K F 0W12 0805
D 23	P234003	D#Y BAS40-04 40120 SOT23	L 26	P250001	CH# 10 UH K 1210	R 44	P201111	R# CE H 10K F 0W12 0805
D 24	P234003	D#Y BAS40-04 40120 SOT23	Q 1	P232104	Q#BC847C N SS SOT23	R 45	P201111	R# CE H 10K F 0W12 0805
D 25	P234003	D#Y BAS40-04 40120 SOT23	Q 2	P232104	Q#BC847C N SS SOT23	R 46	P201137	R# CE H120K F 0W12 0805

PARTLIST

SIRIUS

Item	Order No.	Description	Item	Order No.	Description	Item	Order No.	Description
R 47	P201135	R# CE H100K F 0W12 0805	R114	P201047	R# CE H 22E F 0W12 0805	R202	P201039	R# CE H 10E F 0W12 0805
R 48	P201087	R# CE H 1K F 0W12 0805	R115	P201101	R# CE H 3K9 F 0W12 0805	R203	P201073	R# CE H270E F 0W12 0805
R 49	P201129	R# CE H 56K F 0W12 0805	R116	P201091	R# CE H 1K5 F 0W12 0805	R204	P201103	R# CE H 4K7 F 0W12 0805
R 50	P201087	R# CE H 1K F 0W12 0805	R117	P201039	R# CE H 10E F 0W12 0805	R205	P201063	R# CE H100E F 0W12 0805
R 51	P201129	R# CE H 56K F 0W12 0805	R118	P201085	R# CE H820E F 0W12 0805	R206	P201145	R# CE H270K F 0W12 0805
R 52	P201087	R# CE H 1K F 0W12 0805	R119	P201105	R# CE H 5K6 F 0W12 0805	R207	P201097	R# CE H 2K7 F 0W12 0805
R 53	P201129	R# CE H 56K F 0W12 0805	R120	P201119	R# CE H 22K F 0W12 0805	R208	P201117	R# CE H 18K F 0W12 0805
R 54	P201087	R# CE H 1K F 0W12 0805	R121	P201039	R# CE H 10E F 0W12 0805	R209	P201117	R# CE H 18K F 0W12 0805
R 55	P201087	R# CE H 1K F 0W12 0805	R122	P202230	R# MF H120E F 0W25 MMELF	R210	P201117	R# CE H 18K F 0W12 0805
R 56	P201119	R# CE H 22K F 0W12 0805	R123	P202230	R# MF H120E F 0W25 MMELF	R211	P201117	R# CE H 18K F 0W12 0805
R 57	P201119	R# CE H 22K F 0W12 0805	R124	P200391	R# CE H150E F 0W25 1206	R212	P201117	R# CE H 18K F 0W12 0805
R 58	P201039	R# CE H 10E F 0W12 0805	R125	P201047	R# CE H 22E F 0W12 0805	R216	P201167	R# CE H 2M2 F 0W12 0805
R 59	P201111	R# CE H 10K F 0W12 0805	R126	P201091	R# CE H 1K5 F 0W12 0805	R217	P201159	R# CE H 1M F 0W12 0805
R 60	P201097	R# CE H 2K7 F 0W12 0805	R127	P201087	R# CE H 1K F 0W12 0805	R218	P201087	R# CE H 1K F 0W12 0805
R 61	P201111	R# CE H 10K F 0W12 0805	R128	P201111	R# CE H 10K F 0W12 0805	R219	P201111	R# CE H 10K F 0W12 0805
R 62	P201111	R# CE H 10K F 0W12 0805	R129	P201111	R# CE H 10K F 0W12 0805	R220	P201051	R# CE H 33E F 0W12 0805
R 63	P201055	R# CE H 47E F 0W12 0805	R130	P201089	R# CE H 1K2 F 0W12 0805	R221	P201111	R# CE H 10K F 0W12 0805
R 64	P201055	R# CE H 47E F 0W12 0805	R131	P202182	R# MF H 1E2 F 0W25 MMELF	R222	P201063	R# CE H100E F 0W12 0805
R 65	P201055	R# CE H 47E F 0W12 0805	R132	P202182	R# MF H 1E2 F 0W25 MMELF	R223	P201097	R# CE H 2K7 F 0W12 0805
R 66	P201055	R# CE H 47E F 0W12 0805	R133	P202182	R# MF H 1E2 F 0W25 MMELF	R224	P201087	R# CE H 1K F 0W12 0805
R 67	P201055	R# CE H 47E F 0W12 0805	R134	P202294	R# MF H 56K F 0W25 MMELF	R225	P201135	R# CE H100K F 0W12 0805
R 68	P201055	R# CE H 47E F 0W12 0805	R135	P202182	R# MF H 1E2 F 0W25 MMELF	R226	P201087	R# CE H 1K F 0W12 0805
R 69	P201055	R# CE H 47E F 0W12 0805	R136	P202294	R# MF H 56K F 0W25 MMELF	R227	P201119	R# CE H 22K F 0W12 0805
R 70	P201055	R# CE H 47E F 0W12 0805	R137	P202182	R# MF H 1E2 F 0W25 MMELF	R228	P201111	R# CE H 10K F 0W12 0805
R 72	P201075	R# CE H330E F 0W12 0805	R138	P202182	R# MF H 1E2 F 0W25 MMELF	R229	P201063	R# CE H100E F 0W12 0805
R 73	P201075	R# CE H330E F 0W12 0805	R139	P202182	R# MF H 1E2 F 0W25 MMELF	R230	P201111	R# CE H 10K F 0W12 0805
R 74	P201051	R# CE H 33E F 0W12 0805	R140	P201087	R# CE H 1K F 0W12 0805	R231	P201087	R# CE H 1K F 0W12 0805
R 75	P201079	R# CE H470E F 0W12 0805	R141	P201105	R# CE H 5K6 F 0W12 0805	R232	P201111	R# CE H 10K F 0W12 0805
R 76	P201063	R# CE H100E F 0W12 0805	R142	P201111	R# CE H 10K F 0W12 0805	R233	P201051	R# CE H 33E F 0W12 0805
R 77	P201103	R# CE H 4K7 F 0W12 0805	R143	P201111	R# CE H 10K F 0W12 0805	R234	P201063	R# CE H100E F 0W12 0805
R 78	P201039	R# CE H 10E F 0W12 0805	R144	P201087	R# CE H 1K F 0W12 0805	R235	P201087	R# CE H 1K F 0W12 0805
R 79	P201103	R# CE H 4K7 F 0W12 0805	R145	P201129	R# CE H 56K F 0W12 0805	R236	P201087	R# CE H 1K F 0W12 0805
R 80	P201071	R# CE H220E F 0W12 0805	R146	P201081	R# CE H560E F 0W12 0805	R237	P201055	R# CE H 47E F 0W12 0805
R 81	P201033	R# CE H 5E6 F 0W12 0805	R147	P200391	R# CE H150E F 0W25 1206	R238	P201119	R# CE H 22K F 0W12 0805
R 82	P201063	R# CE H100E F 0W12 0805	R148	P201056	R# CE H 51E F 0W12 0805	R239	P201111	R# CE H 10K F 0W12 0805
R 83	P201103	R# CE H 4K7 F 0W12 0805	R149	P201056	R# CE H 51E F 0W12 0805	R240	P201063	R# CE H100E F 0W12 0805
R 84	P201057	R# CE H 56E F 0W12 0805	R150	P201073	R# CE H270E F 0W12 0805	R241	P201135	R# CE H100K F 0W12 0805
R 85	P201039	R# CE H 10E F 0W12 0805	R151	P201063	R# CE H100E F 0W12 0805	R242	P201079	R# CE H470E F 0W12 0805
R 86	P201103	R# CE H 4K7 F 0W12 0805	R152	P201111	R# CE H 10K F 0W12 0805	R243	P201079	R# CE H470E F 0W12 0805
R 87	P201063	R# CE H100E F 0W12 0805	R153	P201129	R# CE H 56K F 0W12 0805	R244	P201079	R# CE H470E F 0W12 0805
R 88	P201067	R# CE H150E F 0W12 0805	R154	P201111	R# CE H 10K F 0W12 0805	R247	P201051	R# CE H 33E F 0W12 0805
R 89	P201071	R# CE H220E F 0W12 0805	R155	P201111	R# CE H 10K F 0W12 0805	R250	P201091	R# CE H 1K5 F 0W12 0805
R 90	P201045	R# CE H 18E F 0W12 0805	R156	P200391	R# CE H150E F 0W25 1206	S	V754044	PCB MAINBOARD SIRIUS
R 91	P200387	R# CE H100E F 0W25 1206	R157	P201119	R# CE H 22K F 0W12 0805	TI	P243042	LBL N 12,7 X 5,08 WH
R 92	P200391	R# CE H150E F 0W25 1206	R158	P201111	R# CE H 10K F 0W12 0805	XT 1	P252027	X# 11M059200 30 13X5,0
R 93	P200391	R# CE H150E F 0W25 1206	R159	P201135	R# CE H100K F 0W12 0805	Z 1	P234013	D#ZEN 4V7 0W3 C SOT23
R 94	P201047	R# CE H 22E F 0W12 0805	R162	P201111	R# CE H 10K F 0W12 0805	Z 5	P230097	U#431 TL SO8 P
R 95	P201089	R# CE H 1K2 F 0W12 0805	R163	P201119	R# CE H 22K F 0W12 0805	Z 6	P234013	D#ZEN 4V7 0W3 C SOT23
R 96	P201111	R# CE H 10K F 0W12 0805	R164	P201135	R# CE H100K F 0W12 0805	Z 7	P234013	D#ZEN 4V7 0W3 C SOT23
R 97	P202324	R# MF H 1M F 0W25 MMELF	R165	P201081	R# CE H560E F 0W12 0805	Z 8	P234076	D#ZEN 12V 0W3 C SOT23
R 98	P201101	R# CE H 3K9 F 0W12 0805	R166	P201087	R# CE H 1K F 0W12 0805	Z 9	P230097	U#431 TL SO8 P
R 99	P201135	R# CE H100K F 0W12 0805	R167	P201056	R# CE H 51E F 0W12 0805	Z 10	P234013	D#ZEN 4V7 0W3 C SOT23
R100	P201097	R# CE H 2K7 F 0W12 0805	R168	P201056	R# CE H 51E F 0W12 0805		V5653480	FRONT SIRIUS
R101	P201095	R# CE H 2K2 F 0W12 0805	R169	P201073	R# CE H270E F 0W12 0805	D 1	V131667	D LED D3 T GN
R102	P201087	R# CE H 1K F 0W12 0805	R170	P201063	R# CE H100E F 0W12 0805	D 2	V131671	D LED D3 T RD
R103	P201141	R# CE H180K F 0W12 0805	R171	P201119	R# CE H 22K F 0W12 0805	PCB1	V680452	SMD FRONTBOARD SIRIUS
R104	P201119	R# CE H 22K F 0W12 0805	R172	P201111	R# CE H 10K F 0W12 0805	S 1	V324166	SW TCT S 6 1A BT H 7,3
R105	P201103	R# CE H 4K7 F 0W12 0805	R173	P201111	R# CE H 10K F 0W12 0805	S 2	V324166	SW TCT S 6 1A BT H 7,3
R107	P201015	R# CE H 1E F 0W12 0805	R174	P201111	R# CE H 10K F 0W12 0805	S 3	V324166	SW TCT S 6 1A BT H 7,3
R108	P201105	R# CE H 5K6 F 0W12 0805	R190	P201051	R# CE H 33E F 0W12 0805	S 4	V324166	SW TCT S 6 1A BT H 7,3
R109	P201087	R# CE H 1K F 0W12 0805	R191	P201071	R# CE H220E F 0W12 0805	5	B3721930	SW ACC TCT 4,0 BK
R110	P201095	R# CE H 2K2 F 0W12 0805	R192	P201060	R# CE H 75E F 0W12 0805	10	V605335	DECOPLATE SIRIUS
R111	P200391	R# CE H150E F 0W25 1206	R193	P201137	R# CE H120K F 0W12 0805	15	V3619025	SCR D965 M 2,5X 6 STZB
R113	P201051	R# CE H 33E F 0W12 0805	R201	P201103	R# CE H 4K7 F 0W12 0805			

SIRIUS

Page 5 of 9

PARTLIST

SIRIUS

Item	Order No.	Description	Item	Order No.	Description	Item	Order No.	Description
C101	P2142104	C#TH 2 -10P 50	C169	P2100350	C# X7R MU 1N K 50 0805	D 2	P234398	D#A 2 CA HSMP3893 SOT23
C102	P2142104	C#TH 2 -10P 50	C170	P2100410	C# X7R MU 10N K 50 0805	D 3	P234398	D#A 2 CA HSMP3893 SOT23
C103	P2101300	C# COG MU 2P2D 50 0805	C171	P2100410	C# X7R MU 10N K 50 0805	D 4	P2342591	D#BA682 S035A1 DMMELF
C104	P2142104	C#TH 2 -10P 50	C172	P2142084	C#TH 4,5-20P 25	D 5	P234398	D#A 2 CA HSMP3893 SOT23
C106	P2101280	C# COG MU 1P2D 50 0805	C173	P2100350	C# X7R MU 1N K 50 0805	D 6	P234398	D#A 2 CA HSMP3893 SOT23
C107	P2142104	C#TH 2 -10P 50	C174	P2101300	C# COG MU 2P2D 50 0805	D 7	P2342591	D#BA682 S035A1 DMMELF
C108	P2100910	C# COG MU 1P D 50 0805	C175	P2101240	C# X7R MU 100N K 50 0805	D 8	P234398	D#A 2 CA HSMP3893 SOT23
C109	P2100410	C# X7R MU 10N K 50 0805	C176	P2101240	C# X7R MU 100N K 50 0805	D 9	P234398	D#A 2 CA HSMP3893 SOT23
C110	P2100410	C# X7R MU 10N K 50 0805	C177	P2100410	C# X7R MU 10N K 50 0805	D 10	P234099	D#4148 R DMMELF
C111	P2101240	C# X7R MU 100N K 50 0805	C178	P2101240	C# X7R MU 100N K 50 0805	D 11	P234003	D#Y BAS40-04 40120 SOT23
C112	P2100010	C# COG MU 10P G 50 0805	C179	P2100410	C# X7R MU 10N K 50 0805	D 12	P234003	D#Y BAS40-04 40120 SOT23
C113	P2100190	C# COG MU 47P J 50 0805	C180	P2100390	C# X7R MU 4N7K 50 0805	D 13	P234003	D#Y BAS40-04 40120 SOT23
C114	P2101160	C# COG MU 27P J 50 0805	C181	P2101240	C# X7R MU 100N K 50 0805	D 14	P234099	D#4148 R DMMELF
C115	P2101160	C# COG MU 27P J 50 0805	C182	P2101240	C# X7R MU 100N K 50 0805	D 15	P234002	D#Y BAT17 004030 SOT23
C116	P2100410	C# X7R MU 10N K 50 0805	C183	P2101240	C# X7R MU 100N K 50 0805	D 16	P234047	D#BAV99 SER SOT23
C117	P2101240	C# X7R MU 100N K 50 0805	C184	P2101240	C# X7R MU 100N K 50 0805	D 17	P234004	D#BAV70 C-C SOT23
C118	P212046	C# TA 10M M 25 6032	C185	P210091	C# COG MU 1P D 50 0805	D 18	P234004	D#BAV70 C-C SOT23
C119	P212018	C# TA 10M M 16 6032	C186	P210146	C# COG MU 820P J 50 0805	D 19	P234398	D#A 2 CA HSMP3893 SOT23
C120	P2101240	C# X7R MU 100N K 50 0805	C187	P2100010	C# COG MU 10P G 50 0805	D 20	P234398	D#A 2 CA HSMP3893 SOT23
C121	P2100560	C# COG MU 100P F 50 0805	C188	P210146	C# COG MU 820P J 50 0805	D 21	P234398	D#A 2 CA HSMP3893 SOT23
C122	P2101240	C# X7R MU 100N K 50 0805	C189	P210146	C# COG MU 820P J 50 0805	D 22	P2342591	D#BA682 S035A1 DMMELF
C123	P2101240	C# X7R MU 100N K 50 0805	C190	P210164	C# COG MU 1P5D 50 0805	D 23	P234398	D#A 2 CA HSMP3893 SOT23
C124	P2101240	C# X7R MU 100N K 50 0805	C191	P2100910	C# COG MU 1P D 50 0805	D 24	P234398	D#A 2 CA HSMP3893 SOT23
C125	P2101240	C# X7R MU 100N K 50 0805	C192	P2100560	C# COG MU 100P F 50 0805	D 25	P2342591	D#BA682 S035A1 DMMELF
C126	P2100350	C# X7R MU 1N K 50 0805	C193	P2100010	C# COG MU 10P G 50 0805	D 26	P234398	D#A 2 CA HSMP3893 SOT23
C127	P2100350	C# X7R MU 1N K 50 0805	C194	P2101290	C# COG MU 1P8D 50 0805	D 27	P234398	D#A 2 CA HSMP3893 SOT23
C128	P2100350	C# X7R MU 1N K 50 0805	C195	P2100410	C# X7R MU 10N K 50 0805	D 28	P234355	D#A 2 CC HSMP3814 SOT23
C129	P2100210	C# COG MU 100P J 50 0805	C196	P2100390	C# X7R MU 4N7K 50 0805	D 29	P234099	D#4148 R DMMELF
C130	P2100350	C# X7R MU 1N K 50 0805	C197	P2100410	C# X7R MU 10N K 50 0805	D 30	P234099	D#4148 R DMMELF
C131	P2100350	C# X7R MU 1N K 50 0805	C198	P2100350	C# X7R MU 1N K 50 0805	D 31	P234355	D#A 2 CC HSMP3814 SOT23
C132	P2101160	C# COG MU 27P J 50 0805	C202	P2101240	C# X7R MU 100N K 50 0805	D 32	P234216	D#R SM4007 1021A0 DMELF
C133	P2142084	C#TH 4,5-20P 25	C205	P210146	C# COG MU 820P J 50 0805	D 33	P234216	D#R SM4007 1021A0 DMELF
C134	P2101310	C# COG MU 2P7D 50 0805	C207	P2100740	C# COG MU 39P K 50 0805	D 34	P234003	D#Y BAS40-04 40120 SOT23
C135	P2142082	C#TH 2,5- 6P 25	C208	P2100410	C# X7R MU 10N K 50 0805	D 35	P234003	D#Y BAS40-04 40120 SOT23
C136	P2100350	C# X7R MU 1N K 50 0805	C209	P2100410	C# X7R MU 10N K 50 0805	D 36	P234003	D#Y BAS40-04 40120 SOT23
C137	P2101310	C# COG MU 2P7D 50 0805	C211	P2100210	C# COG MU 100P J 50 0805	D 37	P234003	D#Y BAS40-04 40120 SOT23
C138	P2142082	C#TH 2,5- 6P 25	C212	P2100210	C# COG MU 100P J 50 0805	D 38	P234099	D#4148 R DMMELF
C139	P2142080	C#TH 0,7- 2P5 25	C213	P2101240	C# X7R MU 100N K 50 0805	FI 1	P251001	FLTR#EMI 4N7Z 50 2A
C140	P2142082	C#TH 2,5- 6P 25	C214	P212027	C# TA 10M M 25 7343	FI 2	P251031	FLTR#EMI 47P S 25 6A
C141	P2100410	C# X7R MU 10N K 50 0805	C215	P212027	C# TA 10M M 25 7343	FI 3	P251031	FLTR#EMI 47P S 25 6A
C142	P2100410	C# X7R MU 10N K 50 0805	C216	P2101240	C# X7R MU 100N K 50 0805	FI 4	P251041	FLTR#EMI 1N5S 25 6A
C143	P2101190	C# COG MU 4N7J 50 1210	C217	P2100350	C# X7R MU 1N K 50 0805	FI 5	P251041	FLTR#EMI 1N5S 25 6A
C144	P212018	C# TA 10M M 16 6032	C218	P2100350	C# X7R MU 1N K 50 0805	FI 6	P251041	FLTR#EMI 1N5S 25 6A
C145	P2100350	C# X7R MU 1N K 50 0805	C219	P2101240	C# X7R MU 100N K 50 0805	FI 7	P251041	FLTR#EMI 1N5S 25 6A
C147	P210146	C# COG MU 820P J 50 0805	C257	P210220	C# X7R MU 10N K500 1210	FI 9	P251041	FLTR#EMI 1N5S 25 6A
C148	P2100350	C# X7R MU 1N K 50 0805	C258	P2100350	C# X7R MU 1N K 50 0805	FI11	P251041	FLTR#EMI 1N5S 25 6A
C149	P2100910	C# COG MU 1P D 50 0805	C259	P2100350	C# X7R MU 1N K 50 0805	FI12	P251031	FLTR#EMI 47P S 25 6A
C150	P2100190	C# COG MU 47P J 50 0805	C260	P2100350	C# X7R MU 1N K 50 0805	FI13	P251041	FLTR#EMI 1N5S 25 6A
C151	P2101240	C# X7R MU 100N K 50 0805	C261	P2100010	C# COG MU 10P G 50 0805	FI14	P251031	FLTR#EMI 47P S 25 6A
C152	P2100350	C# X7R MU 1N K 50 0805	C262	P2100020	C# X7R MU 470N M 50 1812	FI15	P251041	FLTR#EMI 1N5S 25 6A
C154	P2101240	C# X7R MU 100N K 50 0805	C263	P212027	C# TA 10M M 25 7343	FI16	P251031	FLTR#EMI 47P S 25 6A
C155	P212046	C# TA 10M M 25 6032	C264	P212027	C# TA 10M M 25 7343	FI17	P251031	FLTR#EMI 47P S 25 6A
C156	P2101190	C# COG MU 4N7J 50 1210	C269	P210181	C# COG MU 0P56C50 0805	FI18	P251041	FLTR#EMI 1N5S 25 6A
C158	P2101240	C# X7R MU 100N K 50 0805	C271	P212006	C# TA 4M7M 16 3528	FI19	P251041	FLTR#EMI 1N5S 25 6A
C159	P2101240	C# X7R MU 100N K 50 0805	C272	P212006	C# TA 4M7M 16 3528	FI20	P251041	FLTR#EMI 1N5S 25 6A
C160	P2100410	C# X7R MU 10N K 50 0805	C512	P210181	C# COG MU 0P56C50 0805	FI21	P251041	FLTR#EMI 1N5S 25 6A
C161	P2100350	C# X7R MU 1N K 50 0805	C513	P210181	C# COG MU 0P56C50 0805	FI22	P251031	FLTR#EMI 47P S 25 6A
C162	P2101240	C# X7R MU 100N K 50 0805	C514	P2101300	C# COG MU 2P2D 50 0805	FI23	P251031	FLTR#EMI 47P S 25 6A
C163	P2100560	C# COG MU 100P F 50 0805	C675	P2101240	C# X7R MU 100N K 50 0805	FI24	P251031	FLTR#EMI 47P S 25 6A
C164	P2100350	C# X7R MU 1N K 50 0805	C786	P2100350	C# X7R MU 1N K 50 0805	FI25	P251041	FLTR#EMI 1N5S 25 6A
C165	P2101240	C# X7R MU 100N K 50 0805	C787	P2100350	C# X7R MU 1N K 50 0805	FI26	P251041	FLTR#EMI 1N5S 25 6A
C166	P2100410	C# X7R MU 10N K 50 0805	C789	P210184	C# COG MU 0P47C50 0805	FI27	P251041	FLTR#EMI 1N5S 25 6A
C167	P2100410	C# X7R MU 10N K 50 0805	C793	P2100350	C# X7R MU 1N K 50 0805	FI28	P251031	FLTR#EMI 47P S 25 6A
C168	P2100350	C# X7R MU 1N K 50 0805	D 1	P234398	D#A 2 CA HSMP3893 SOT23	FI29	P251041	FLTR#EMI 1N5S 25 6A

PARTLIST

SIRIUS

Item	Order No.	Description	Item	Order No.	Description	Item	Order No.	Description
FI30	P251001	FLTR#EMI 4N7Z 50 2A	L 46	P250620	CH# 18 NH J 0805	Q 26	P232247	Q#BCR116 DN SS SOT23
I 1	P231071	U#24C04 SO8 P	L 47	P250574	CH# 8,2 NH D 0805	Q 27	P232017	Q#BSR16 P SS SOT23
I 2	B1337931	RF#AMPL ERA- 4 HI-REL	L 48	P250507	CH# 0,12UH K 1008	Q 28	P232247	Q#BCR116 DN SS SOT23
I 4	P231071	U#24C04 SO8 P	L 49	P250011	CH# 1 UH M 1210	Q 29	P232017	Q#BSR16 P SS SOT23
I 5	B1337931	RF#AMPL ERA- 4 HI-REL	L 50	P250624	CH# 0,18UH J 1008	Q 30	P232218	Q#SI4948EY FP P SO8
I 6	P250542	T# DIR COUPLER 75E 15DB	L 51	P250628	CH# 0,39UH J 1008	R 1	P201059	R# CE H 68E F 0W12 0805
I 7	P230062	U#78L05A LM SO8 P	L 52	P250623	CH# 0,15UH J 1008	R 3	P201063	R# CE H100E F 0W12 0805
I 8	P231417	U#25 VNA SO8 P	L 53	P250538	CH# 68 NH J 1008	R 4	P201085	R# CE H820E F 0W12 0805
I 9	P230062	U#78L05A LM SO8 P	L 54	P250507	CH# 0,12UH K 1008	R 5	P201033	R# CE H 5E6 F 0W12 0805
I 10	P236490	U#10386 INA DBSM86 P	L 55	P2505140	CH# 39 NH J 1008	R 6	P201085	R# CE H820E F 0W12 0805
I 11	P230768	U#5534 NE SO8 P	L 56	P250548	CH# 47 NH J 1008	R 7	P201084	R# CE H750E F 0W12 0805
I 12	P231816	U#2325 LMX TSSOP20I	L 57	P250614	CH# 1,8 NH D 0805	R 8	P201084	R# CE H750E F 0W12 0805
I 13	B1337931	RF#AMPL ERA- 4 HI-REL	L 58	P250548	CH# 47 NH J 1008	R 9	P201084	R# CE H750E F 0W12 0805
I 14	P230951	U#7662CBA ICL SO8 P	L 59	P250620	CH# 18 NH J 0805	R 10	P201065	R# CE H120E F 0W12 0805
I 15	P230542	U#8591 PCF SOL16 P	L 60	P250548	CH# 47 NH J 1008	R 11	P201073	R# CE H270E F 0W12 0805
I 16	B1337931	RF#AMPL ERA- 4 HI-REL	L 61	P250574	CH# 8,2 NH D 0805	R 12	P201045	R# CE H 18E F 0W12 0805
I 17	P230936	U#8444A TDA SOL20 P	L 62	P250575	CH# 10 NH J 0805	R 14	P201354	R# CE H 0E 0W12 0805
I 18	P236053	U#8025A SA SSOF20 I	L 63	P250614	CH# 1,8 NH D 0805	R 18	P201044	R# CE H 16E F 0W12 0805
I 19	B1337931	RF#AMPL ERA- 4 HI-REL	L 64	P250621	CH# 22 NH J 0805	R 19	P201044	R# CE H 16E F 0W12 0805
I 20	P252631	O# 1550-1900 VCO1110/1M8	L 65	P250509	CH# 1,5 UH M 1210	R 20	P201063	R# CE H100E F 0W12 0805
I 21	P252630	O# 1250-1600 VCO1110/1M8	L 66	P250509	CH# 1,5 UH M 1210	R 21	P201063	R# CE H100E F 0W12 0805
I 22	P252629	O# 950-1300 VCO1110/1M8	L 67	P250011	CH# 1 UH M 1210	R 22	P201063	R# CE H100E F 0W12 0805
I 23	P230026	U#358 LM SO8 P	L 68	P250011	CH# 1 UH M 1210	R 24	P201354	R# CE H 0E 0W12 0805
I 24	B1337931	RF#AMPL ERA- 4 HI-REL	L 69	P250011	CH# 1 UH M 1210	R 26	P201084	R# CE H750E F 0W12 0805
I 25	B1337931	RF#AMPL ERA- 4 HI-REL	L 70	P250507	CH# 0,12UH K 1008	R 27	P201084	R# CE H750E F 0W12 0805
I 26	P236425	U#MD54-0005 SOT23-5I	L 71	P250516	CH# 3,3 UH K 1008	R 28	P201084	R# CE H750E F 0W12 0805
I 27	P230911	U#8574A PCF SOL16 P	L 72	P250608	CH# 2,2 UH K 1008	R 29	P201084	R# CE H750E F 0W12 0805
I 28	P230026	U#358 LM SO8 P	L 73	P250617	CH# 3,3 NH D 0805	R 30	P201085	R# CE H820E F 0W12 0805
I 29	P252628	O# 960- 985 VCO1110/1M8	L 74	P250011	CH# 1 UH M 1210	R 31	P201085	R# CE H820E F 0W12 0805
I 33	P230425	U#74HCT125 SO14 I	L 75	P250507	CH# 0,12UH K 1008	R 32	P201091	R# CE H 1K5 F 0W12 0805
I 34	P230062	U#78L05A LM SO8 P	L 76	P250507	CH# 0,12UH K 1008	R 33	P202212	R# MF H 22E F 0W25 MMELF
L 2	P250509	CH# 1,5 UH M 1210	L 77	P250620	CH# 18 NH J 0805	R 34	P202212	R# MF H 22E F 0W25 MMELF
L 11	P250507	CH# 0,12UH K 1008	L 78	P250509	CH# 1,5 UH M 1210	R 35	P201050	R# CE H 30E F 0W12 0805
L 12	P250516	CH# 3,3 UH K 1008	L 79	P250509	CH# 1,5 UH M 1210	R 36	P201087	R# CE H 1K F 0W12 0805
L 13	P2505140	CH# 39 NH J 1008	L 80	P250625	CH# 0,22UH J 1008	R 37	P201069	R# CE H180E F 0W12 0805
L 14	P250573	CH# 6,8 NH D 0805	L246	P250625	CH# 0,22UH J 1008	R 38	P201059	R# CE H 68E F 0W12 0805
L 15	P250574	CH# 8,2 NH D 0805	P 1	P201400	R#TCE H200E MN0W1 S4 TO	R 39	P201063	R# CE H100E F 0W12 0805
L 16	P250608	CH# 2,2 UH K 1008	P 2	P201393	R#TCE H 50K M 0W25 S4 TS	R 40	P202214	R# MF H 27E F 0W25 MMELF
L 17	P250620	CH# 18 NH J 0805	P 3	P201392	R#TCE H200E M 0W25 S4 TS	R 41	P202214	R# MF H 27E F 0W25 MMELF
L 18	P250619	CH# 4,7 NH D 0805	Q 1	P232101	Q#BC859C P SS SOT23	R 42	P201060	R# CE H 75E F 0W12 0805
L 19	P250576	CH# 12 NH J 0805	Q 2	P232101	Q#BC859C P SS SOT23	R 43	P201057	R# CE H 56E F 0W12 0805
L 22	P250623	CH# 0,15UH J 1008	Q 3	P232004	Q#BC849C N SS SOT23	R 44	P201075	R# CE H330E F 0W12 0805
L 23	P250549	CH# 82 NH J 1008	Q 4	P232004	Q#BC849C N SS SOT23	R 45	P201091	R# CE H 1K5 F 0W12 0805
L 24	P250546	CH# 27 NH J 1008	Q 5	P232004	Q#BC849C N SS SOT23	R 46	P201060	R# CE H 75E F 0W12 0805
L 25	P250577	CH# 15 NH J 0805	Q 6	P232017	Q#BSR16 P SS SOT23	R 47	P205226	R# CE H220E F 0W06 0603
L 26	P250547	CH# 33 NH J 1008	Q 7	P232104	Q#BC847C N SS SOT23	R 48	P201076	R# CE H360E F 0W12 0805
L 27	P250618	CH# 3,9 NH D 0805	Q 8	P232247	Q#BCR116 DN SS SOT23	R 49	P201123	R# CE H 33K F 0W12 0805
L 28	P250576	CH# 12 NH J 0805	Q 9	P232017	Q#BSR16 P SS SOT23	R 50	P201135	R# CE H100K F 0W12 0805
L 29	P250576	CH# 12 NH J 0805	Q 10	P232017	Q#BSR16 P SS SOT23	R 51	P201105	R# CE H 5K6 F 0W12 0805
L 30	P250621	CH# 22 NH J 0805	Q 11	P232017	Q#BSR16 P SS SOT23	R 52	P201071	R# CE H220E F 0W12 0805
L 32	P250577	CH# 15 NH J 0805	Q 12	P232017	Q#BSR16 P SS SOT23	R 53	P201111	R# CE H 10K F 0W12 0805
L 33	P250619	CH# 4,7 NH D 0805	Q 13	P232017	Q#BSR16 P SS SOT23	R 54	P201111	R# CE H 10K F 0W12 0805
L 34	P250574	CH# 8,2 NH D 0805	Q 14	P232017	Q#BSR16 P SS SOT23	R 55	P201111	R# CE H 10K F 0W12 0805
L 35	P250576	CH# 12 NH J 0805	Q 15	P232017	Q#BSR16 P SS SOT23	R 56	P201111	R# CE H 10K F 0W12 0805
L 36	P250011	CH# 1 UH M 1210	Q 16	P232004	Q#BC849C N SS SOT23	R 57	P201123	R# CE H 33K F 0W12 0805
L 37	P250507	CH# 0,12UH K 1008	Q 17	P232104	Q#BC847C N SS SOT23	R 58	P201135	R# CE H100K F 0W12 0805
L 38	P250538	CH# 68 NH J 1008	Q 18	P232247	Q#BCR116 DN SS SOT23	R 59	P201057	R# CE H 56E F 0W12 0805
L 39	P250547	CH# 33 NH J 1008	Q 19	P232247	Q#BCR116 DN SS SOT23	R 60	P201060	R# CE H 75E F 0W12 0805
L 40	P250548	CH# 4,7 NH J 1008	Q 20	P232247	Q#BCR116 DN SS SOT23	R 61	P201087	R# CE H 1K F 0W12 0805
L 41	P250624	CH# 0,18UH J 1008	Q 21	P232247	Q#BCR116 DN SS SOT23	R 62	P201115	R# CE H 15K F 0W12 0805
L 42	P250546	CH# 27 NH J 1008	Q 22	P232247	Q#BCR116 DN SS SOT23	R 63	P201087	R# CE H 1K F 0W12 0805
L 43	P250575	CH# 10 NH J 0805	Q 23	P232017	Q#BSR16 P SS SOT23	R 64	P201111	R# CE H 10K F 0W12 0805
L 44	P250577	CH# 15 NH J 0805	Q 24	P232247	Q#BCR116 DN SS SOT23	R 65	P201063	R# CE H100E F 0W12 0805
L 45	P250620	CH# 18 NH J 0805	Q 25	P232017	Q#BSR16 P SS SOT23	R 66	P205218	R# CE H100E F 0W06 0603

PARTLIST

SIRIUS

Item	Order No.	Description	Item	Order No.	Description	Item	Order No.	Description
R 67	P201073	R# CE H270E F 0W12 0805	R132	P201135	R# CE H100K F 0W12 0805	R200	P205258	R# CE H 4K7 F 0W06 0603
R 68	P202216	R# MF H 33E F 0W25 MMELF	R133	P201111	R# CE H 10K F 0W12 0805	R201	P205290	R# CE H100K F 0W06 0603
R 69	P202214	R# MF H 27E F 0W25 MMELF	R134	P201111	R# CE H 10K F 0W12 0805	R202	P205276	R# CE H 27K F 0W06 0603
R 70	P201063	R# CE H100E F 0W12 0805	R135	P201093	R# CE H 1K8 F 0W12 0805	R203	P205290	R# CE H100K F 0W06 0603
R 71	P201063	R# CE H100E F 0W12 0805	R137	P201087	R# CE H 1K F 0W12 0805	R204	P205258	R# CE H 4K7 F 0W06 0603
R 72	P201063	R# CE H100E F 0W12 0805	R138	P201087	R# CE H 1K F 0W12 0805	R205	P205290	R# CE H100K F 0W06 0603
R 73	P201105	R# CE H 5K6 F 0W12 0805	R139	P201133	R# CE H 82K F 0W12 0805	R206	P205276	R# CE H 27K F 0W06 0603
R 74	P205218	R# CE H100E F 0W06 0603	R140	P201091	R# CE H 1K5 F 0W12 0805	R207	P205290	R# CE H100K F 0W06 0603
R 75	P205282	R# CE H 47K F 0W06 0603	R141	P201119	R# CE H 22K F 0W12 0805	R208	P205290	R# CE H100K F 0W06 0603
R 76	P202214	R# MF H 27E F 0W25 MMELF	R142	P201067	R# CE H150E F 0W12 0805	R209	P205276	R# CE H 27K F 0W06 0603
R 77	P201075	R# CE H330E F 0W12 0805	R143	P201073	R# CE H270E F 0W12 0805	R210	P205290	R# CE H100K F 0W06 0603
R 78	P201041	R# CE H 12E F 0W12 0805	R144	P201067	R# CE H150E F 0W12 0805	R211	P205258	R# CE H 4K7 F 0W06 0603
R 79	P201060	R# CE H 75E F 0W12 0805	R145	P201067	R# CE H150E F 0W12 0805	R212	P205290	R# CE H100K F 0W06 0603
R 80	P201071	R# CE H220E F 0W12 0805	R146	P201053	R# CE H 39E F 0W12 0805	R213	P205276	R# CE H 27K F 0W06 0603
R 81	P202220	R# MF H 47E F 0W25 MMELF	R147	P201067	R# CE H150E F 0W12 0805	R215	P205282	R# CE H 47K F 0W06 0603
R 82	P202212	R# MF H 22E F 0W25 MMELF	R148	P201079	R# CE H470E F 0W12 0805	R216	P201063	R# CE H100E F 0W12 0805
R 83	P202212	R# MF H 27E F 0W25 MMELF	R149	P201085	R# CE H820E F 0W12 0805	R217	P205282	R# CE H 47K F 0W06 0603
R 84	P201119	R# CE H 22K F 0W12 0805	R150	P205258	R# CE H 4K7 F 0W06 0603	R218	P201063	R# CE H100E F 0W12 0805
R 85	P201087	R# CE H 1K F 0W12 0805	R151	P205290	R# CE H100K F 0W06 0603	R219	P201045	R# CE H 18E F 0W12 0805
R 86	P201067	R# CE H150E F 0W12 0805	R152	P205290	R# CE H100K F 0W06 0603	R220	P202214	R# MF H 27E F 0W25 MMELF
R 87	P201067	R# CE H150E F 0W12 0805	R153	P205276	R# CE H 27K F 0W06 0603	R221	P202214	R# MF H 27E F 0W25 MMELF
R 88	P201070	R# CE H200E F 0W12 0805	R154	P205258	R# CE H 4K7 F 0W06 0603	R222	P201135	R# CE H100K F 0W12 0805
R 89	P201135	R# CE H100K F 0W12 0805	R155	P205290	R# CE H100K F 0W06 0603	R223	P201135	R# CE H100K F 0W12 0805
R 90	P201127	R# CE H 27K F 0W12 0805	R156	P205290	R# CE H100K F 0W06 0603	R224	P201063	R# CE H100E F 0W12 0805
R 91	P201109	R# CE H 8K2 F 0W12 0805	R157	P205258	R# CE H 4K7 F 0W06 0603	R225	P201057	R# CE H 56E F 0W12 0805
R 92	P201111	R# CE H 10K F 0W12 0805	R158	P205290	R# CE H100K F 0W06 0603	R238	P201069	R# CE H180E F 0W12 0805
R 93	P201135	R# CE H100K F 0W12 0805	R159	P205290	R# CE H100K F 0W06 0603	R239	P201063	R# CE H100E F 0W12 0805
R 94	P201111	R# CE H 10K F 0W12 0805	R160	P205290	R# CE H100K F 0W06 0603	R240	P201063	R# CE H100E F 0W12 0805
R 95	P201071	R# CE H220E F 0W12 0805	R161	P205290	R# CE H100K F 0W06 0603	R242	P201354	R# CE H 0E 0W12 0805
R 96	P201133	R# CE H 82K F 0W12 0805	R162	P205290	R# CE H100K F 0W06 0603	R243	P201354	R# CE H 0E 0W12 0805
R 97	P201121	R# CE H 27K F 0W12 0805	R163	P205290	R# CE H100K F 0W06 0603	R244	P201354	R# CE H 0E 0W12 0805
R 98	P201101	R# CE H 3K9 F 0W12 0805	R164	P201087	R# CE H 1K F 0W12 0805	R245	P201354	R# CE H 0E 0W12 0805
R 99	P201101	R# CE H 3K9 F 0W12 0805	R165	P201073	R# CE H270E F 0W12 0805	R246	P201354	R# CE H 0E 0W12 0805
R100	P201103	R# CE H 4K7 F 0W12 0805	R166	P201111	R# CE H 10K F 0W12 0805	R674	P201115	R# CE H 15K F 0W12 0805
R101	P201103	R# CE H 4K7 F 0W12 0805	R167	P205224	R# CE H180E F 0W06 0603	R749	P201084	R# CE H750E F 0W12 0805
R103	P201087	R# CE H 1K F 0W12 0805	R168	P205216	R# CE H 82E F 0W06 0603	R750	P202212	R# MF H 22E F 0W25 MMELF
R104	P201087	R# CE H 1K F 0W12 0805	R169	P201076	R# CE H360E F 0W12 0805	R751	P202212	R# MF H 22E F 0W25 MMELF
R105	P201085	R# CE H820E F 0W12 0805	R170	P201089	R# CE H 1K2 F 0W12 0805	R752	P201084	R# CE H750E F 0W12 0805
R106	P201094	R# CE H 2K F 0W12 0805	R171	P201091	R# CE H 1K5 F 0W12 0805	R754	P201084	R# CE H750E F 0W12 0805
R107	P201087	R# CE H 1K F 0W12 0805	R172	P201098	R# CE H 3K F 0W12 0805	R756	P201084	R# CE H750E F 0W12 0805
R108	P205242	R# CE H 1K F 0W06 0603	R173	P201109	R# CE H 8K2 F 0W12 0805	R758	P201084	R# CE H750E F 0W12 0805
R109	P205266	R# CE H 10K F 0W06 0603	R174	P201111	R# CE H 10K F 0W12 0805	R760	P201085	R# CE H820E F 0W12 0805
R110	P205282	R# CE H 47K F 0W06 0603	R175	P201045	R# CE H 18E F 0W12 0805	R763	P201085	R# CE H820E F 0W12 0805
R111	P205242	R# CE H 1K F 0W06 0603	R176	P201135	R# CE H100K F 0W12 0805	R765	P201085	R# CE H820E F 0W12 0805
R112	P202214	R# MF H 27E F 0W25 MMELF	R177	P201127	R# CE H 47K F 0W12 0805	R766	P201085	R# CE H820E F 0W12 0805
R113	P201075	R# CE H330E F 0W12 0805	R178	P202232	R# MF H150E F 0W25 MMELF	R769	P201084	R# CE H750E F 0W12 0805
R114	P201057	R# CE H 56E F 0W12 0805	R179	P206406	R# CE H 16K9 F 0W25 1206	R771	P201084	R# CE H750E F 0W12 0805
R115	P201084	R# CE H750E F 0W12 0805	R180	P206363	R# CE H 6K04F 0W25 1206	R773	P201084	R# CE H750E F 0W12 0805
R116	P201084	R# CE H750E F 0W12 0805	R181	P201053	R# CE H 39E F 0W12 0805	R774	P201084	R# CE H750E F 0W12 0805
R117	P201084	R# CE H750E F 0W12 0805	R182	P202216	R# MF H 33E F 0W25 MMELF	R777	P201084	R# CE H750E F 0W12 0805
R118	P201084	R# CE H750E F 0W12 0805	R183	P202216	R# MF H 33E F 0W25 MMELF	R779	P201084	R# CE H750E F 0W12 0805
R119	P201084	R# CE H750E F 0W12 0805	R184	P201059	R# CE H 68E F 0W12 0805	R781	P201084	R# CE H750E F 0W12 0805
R120	P201084	R# CE H750E F 0W12 0805	R185	P201050	R# CE H 30E F 0W12 0805	R782	P201084	R# CE H750E F 0W12 0805
R121	P201084	R# CE H750E F 0W12 0805	R186	P201056	R# CE H 51E F 0W12 0805	R784	P201084	R# CE H750E F 0W12 0805
R122	P201085	R# CE H820E F 0W12 0805	R187	P201064	R# CE H110E F 0W12 0805	R785	P201063	R# CE H100E F 0W12 0805
R123	P201085	R# CE H820E F 0W12 0805	R188	P201078	R# CE H430E F 0W12 0805	R786	P201063	R# CE H100E F 0W12 0805
R124	P201135	R# CE H100K F 0W12 0805	R189	P201111	R# CE H 10K F 0W12 0805	S	V754034	PCB CONVERTOR II ORION
R125	P202220	R# MF H 47E F 0W25 MMELF	R190	P201135	R# CE H100K F 0W12 0805	TI	P243042	LBL N 12,7 X 5,08 WH
R126	P201089	R# CE H 1K2 F 0W12 0805	R193	P205276	R# CE H 27K F 0W06 0603	Z 1	P230097	U#431 TL SO8 P
R127	P201091	R# CE H 1K5 F 0W12 0805	R195	P205276	R# CE H 27K F 0W06 0603			
R128	P201111	R# CE H 10K F 0W12 0805	R196	P205276	R# CE H 27K F 0W06 0603		V5653495	ACC - SET SIRIUS
R129	P201045	R# CE H 18E F 0W12 0805	R197	P205258	R# CE H 4K7 F 0W06 0603	20	C314101	F 5X20 T 1A L UL
R130	P201109	R# CE H 8K2 F 0W12 0805	R198	P205290	R# CE H100K F 0W06 0603	40	B331300	J BLK1S FWT P 3 Q1,5E1,5
R131	P201127	R# CE H 47K F 0W12 0805	R199	P205276	R# CE H 27K F 0W06 0603	60	V592996	BAG SPEC ETI 60X 80 WL

PARTLIST

SIRIUS

Item	Order No.	Description	Item	Order No.	Description	Item	Order No.	Description
70	V592997	BAG SPEC ETI120X180 WL						
	<u>V5653490</u>	<u>ASSEMBLY SIRIUS</u>						
10	V6053363	COVER LEFT SIRIUS						
15	V3621212	SCR Z7985 M 3 X 6 STZN						
20	B361315	SPR PCB LOCK HING						
25	V348074	RVT SNAP 3 C 3 PLPLBK						
50	B332124	J F TERM 75E						
100	V3621212	SCR Z7985 M 3 X 6 STZN						
200	B337303	J MCX CR MWS C1,8 75E AP						
205	V343024	CBL COA RG179BU 75E						
300	Z3495101	CD CT FTFT P10 300						
305	Z3495114	CD CT FTFT P11 350						
	<u>V5653267</u>	<u>BOXKIT SIRIUS</u>						
10	V6052913	BOX201 615X 285X184 5BB						
20	V6230505	BOXF SPEC TOP SIRIUS PEF						
21	V6230506	BOXF SPEC BTM SIRIUS PEF						
	<u>V5653201</u>	<u>BACKBOARD RACK SIRIUS</u>						
F 1	R314516	F A H+C 6A 5X20 BV B						
F 2	R314516	F A H+C 6A 5X20 BV B						
F 3	R314516	F A H+C 6A 5X20 BV B						
F 4	R314516	F A H+C 6A 5X20 BV B						
J 1	B338630	J°HM5CS MBT P55 M2C2 1,6						
J 2	B338630	J°HM5CS MBT P55 M2C2 1,6						
J 3	B338630	J°HM5CS MBT P55 M2C2 1,6						
J 4	B338630	J°HM5CS MBT P55 M2C2 1,6						
J 5	B338630	J°HM5CS MBT P55 M2C2 1,6						
J 6	B338630	J°HM5CS MBT P55 M2C2 1,6						
J 7	B338630	J°HM5CS MBT P55 M2C2 1,6						
J 8	B338630	J°HM5CS MBT P55 M2C2 1,6						
J 14	R3135014	J DE WW MWT P 9 FTM						
J 15	B331357	J BLK1S MBT P 3 E2SCR						
J 16	B331357	J BLK1S MBT P 3 E2SCR						
J 17	B331357	J BLK1S MBT P 3 E2SCR						
J 18	B331357	J BLK1S MBT P 3 E2SCR						
PCB1	V751970	PCB BACKBOARD ORION						
10	V3685433	I NUT ST M3 - 5 PCB ST						
30	V363550	SCR D7981F 2,2X 6,5STZN						
40	K314103	F 5X20 T 3A15 H UL						
50	K3135033	J D SCR/L M/U 7,9-4,85NI						

Chapter 4

Schematic Diagrams

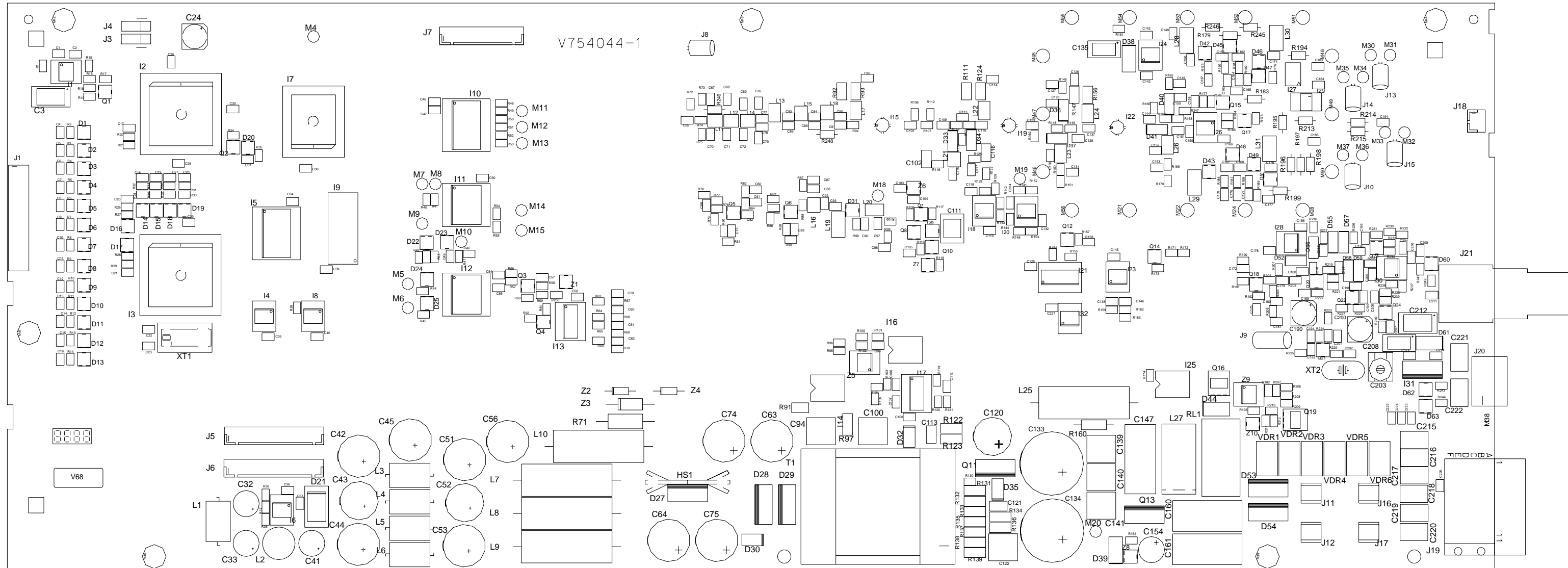
MAINBOARD (IF50) SIRIUS	V5653471
MAINBOARD (IF75) SIRIUS	V5653470
FRONT SIRIUS	V5653480
CONVERTOR SIRIUS	V5653227
BACKBOARD RACK SIRIUS	V5653201

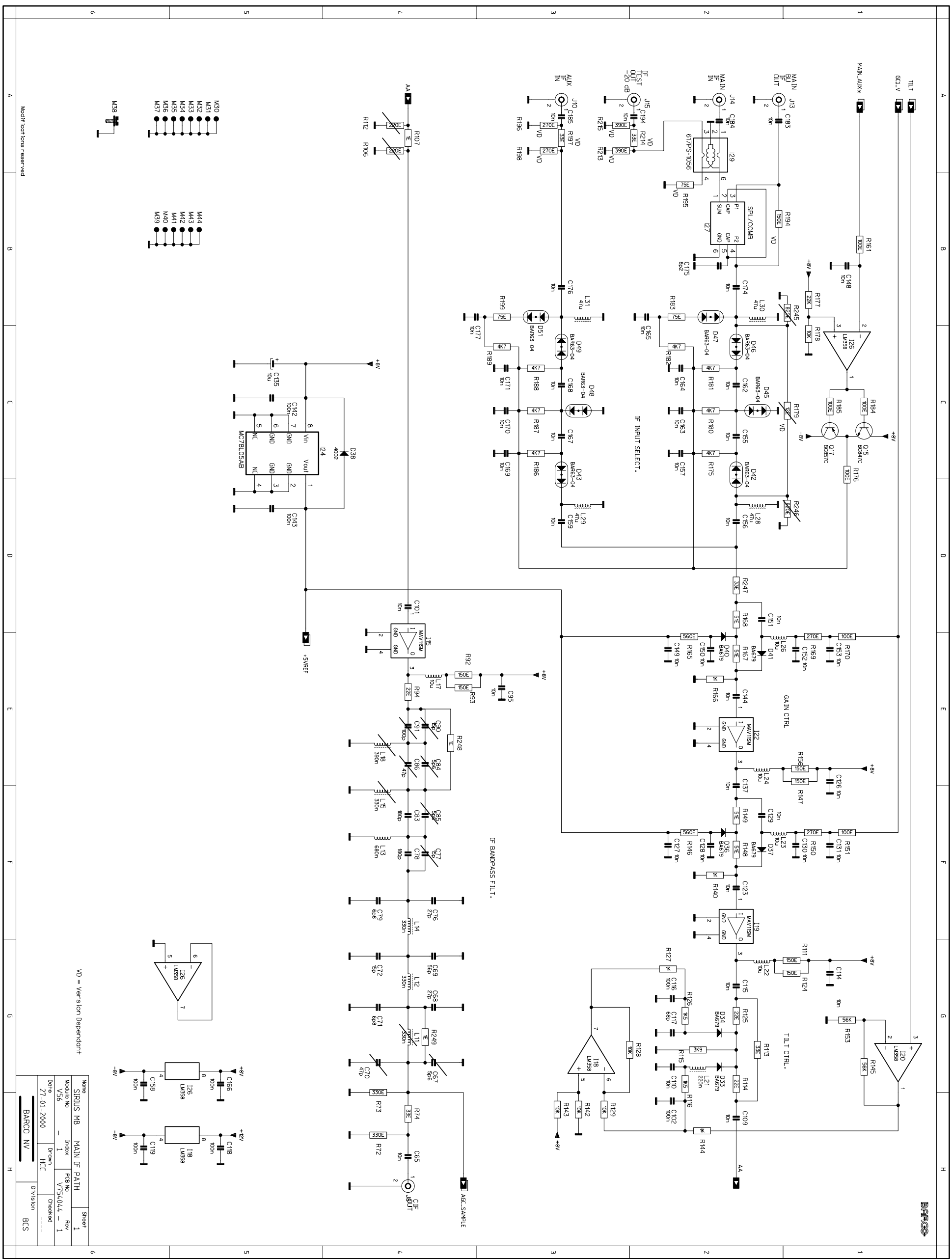
The schematic diagrams can differ from the parts lists. Only the parts lists contains all the correct component values.

MAINBOARD

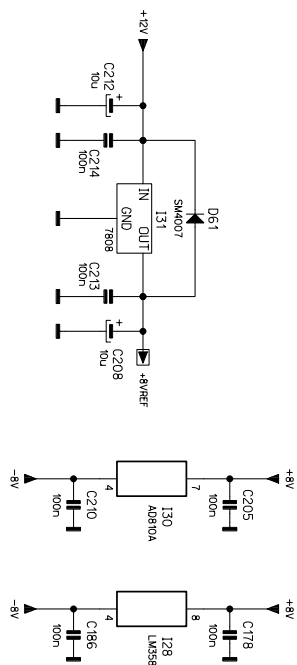
V5653470

V5653471

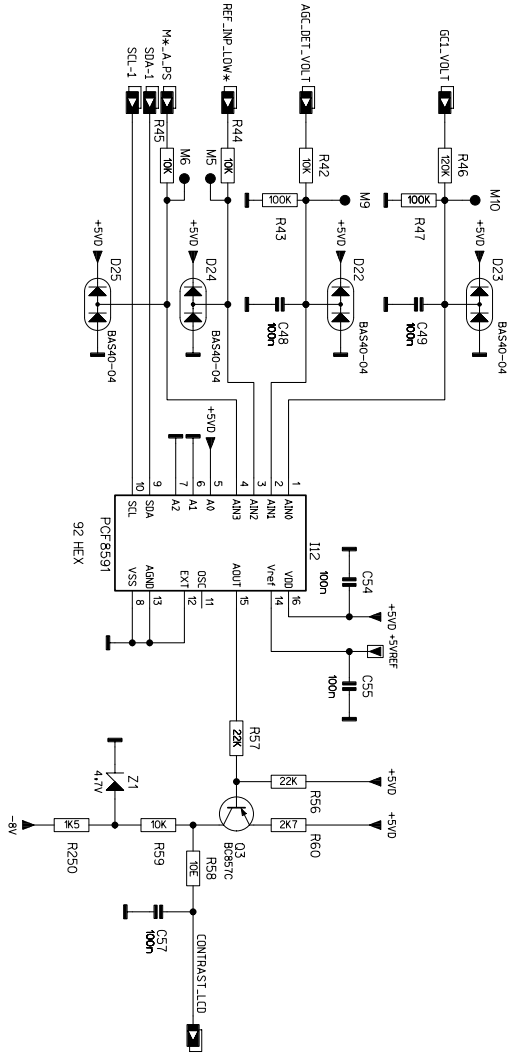
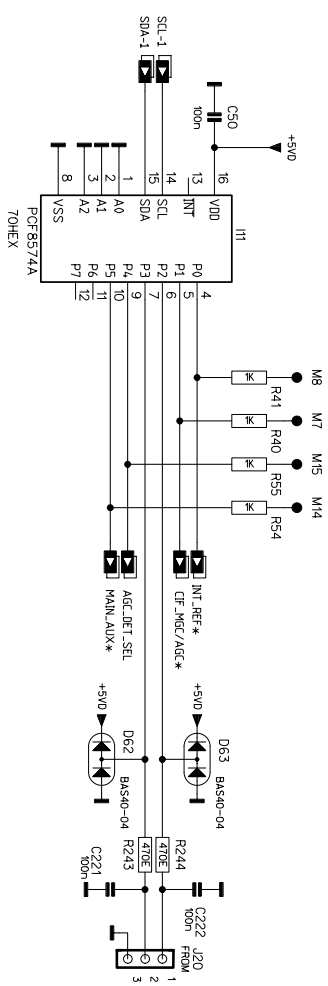
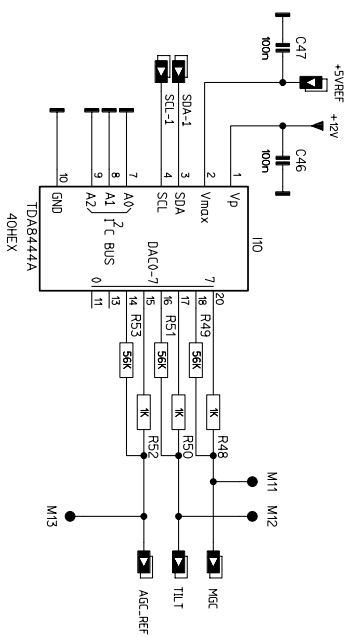




Name	SIRIUS MB		MAIN IF PATH	Sheet 1
Module No	V56	Index 1	PGB No V754,044	Rev 1
Date	27-01-2000	Drawn HIC	Checked	----
BARCO NV			Division	BCS

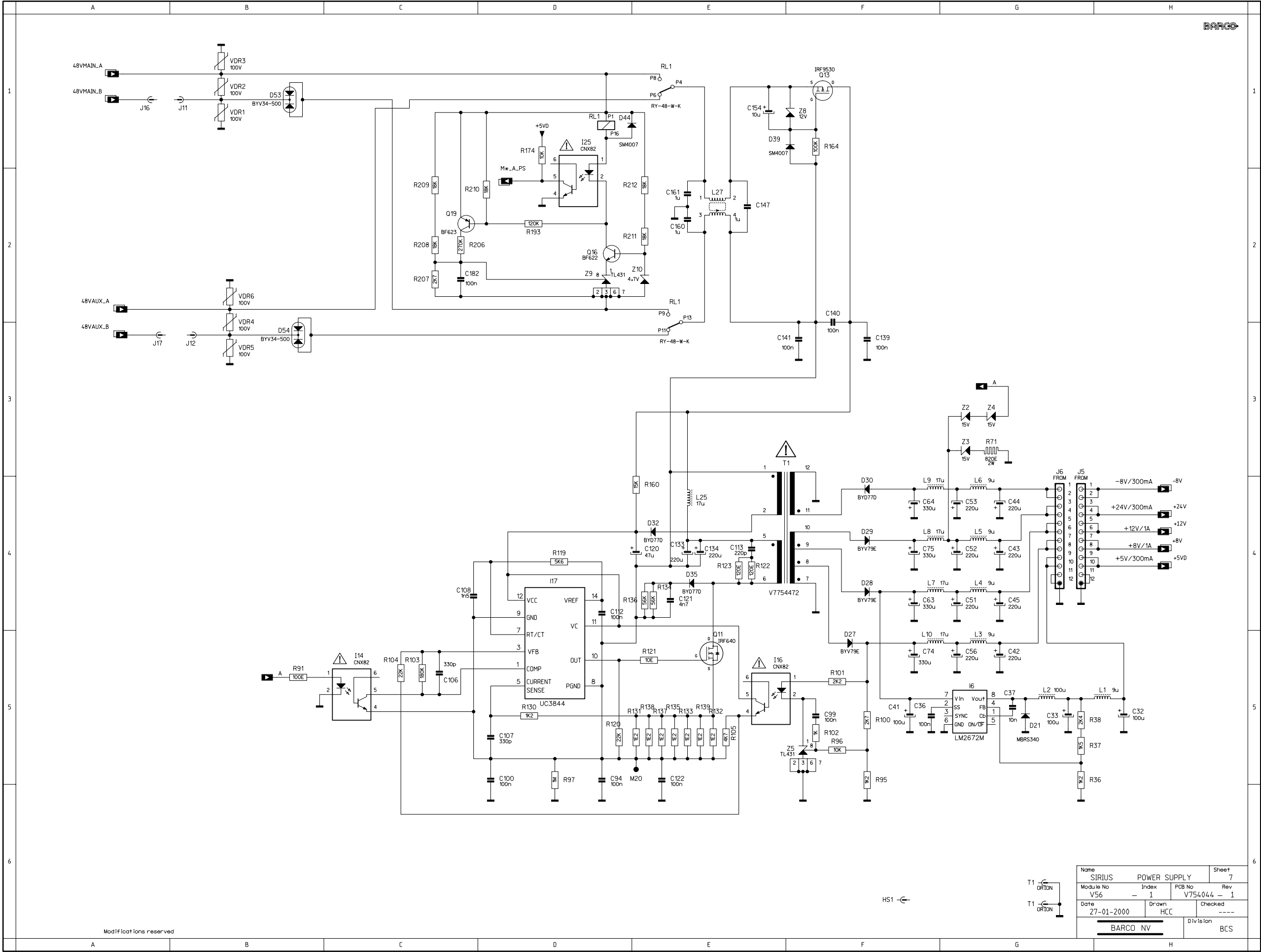


Modifications reserved

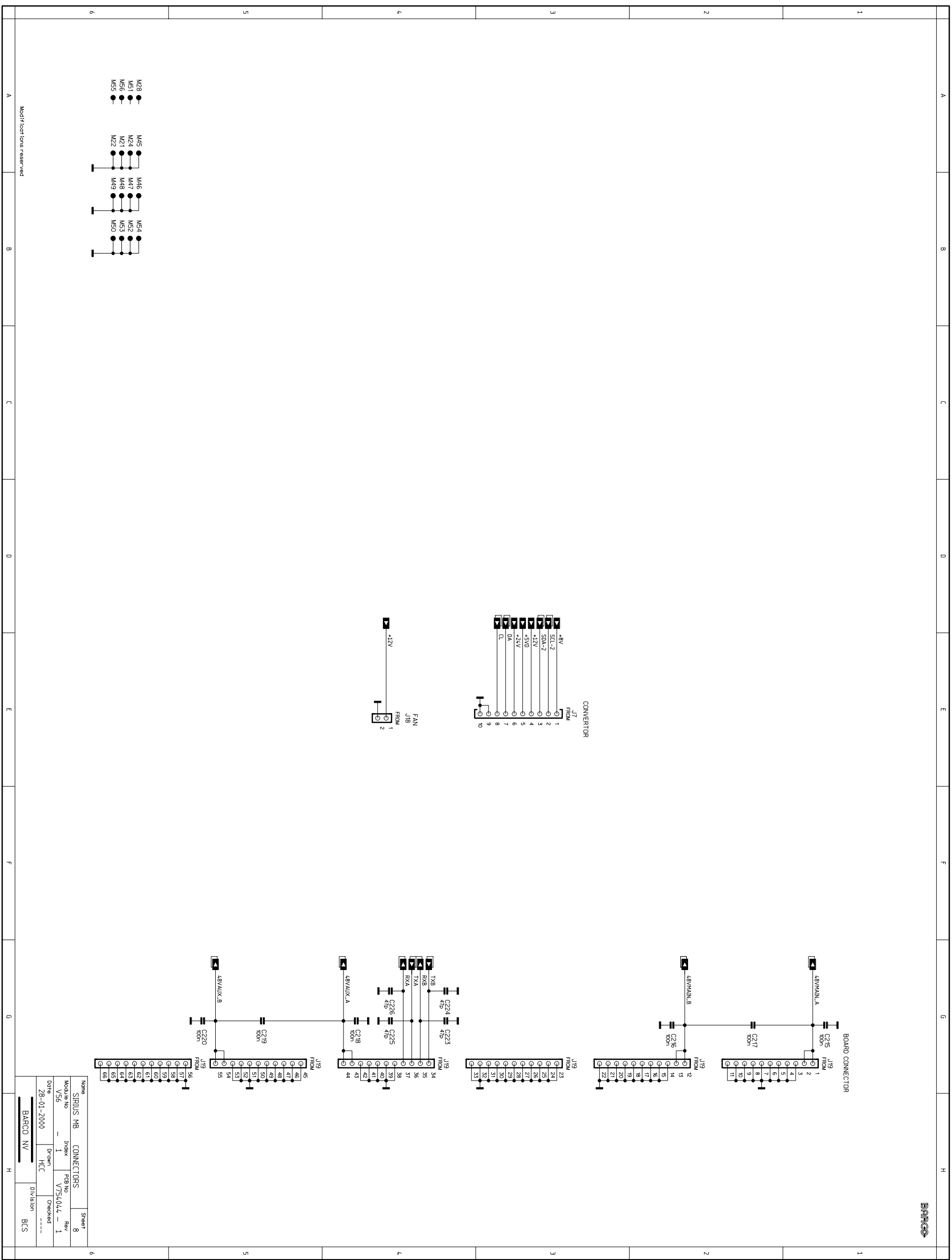


Modifications reserved

Name		I/O Interfaces		Sheet
Module No	Index	Pcb No	Rev	6
V56	1	V754044	Rev 1	
Date	21-01-2000	HC	Checked	----
BARCO NV		Division		BCS

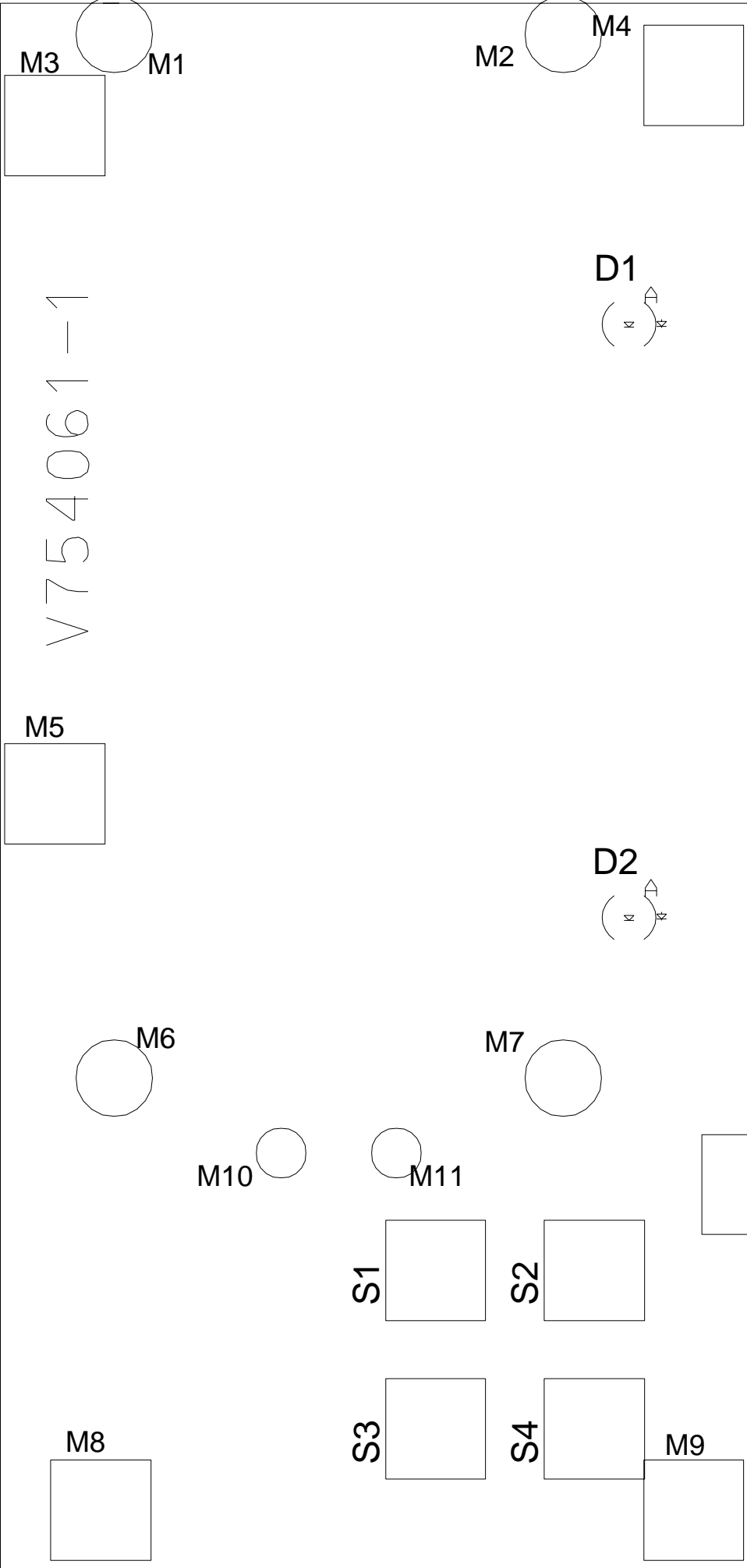


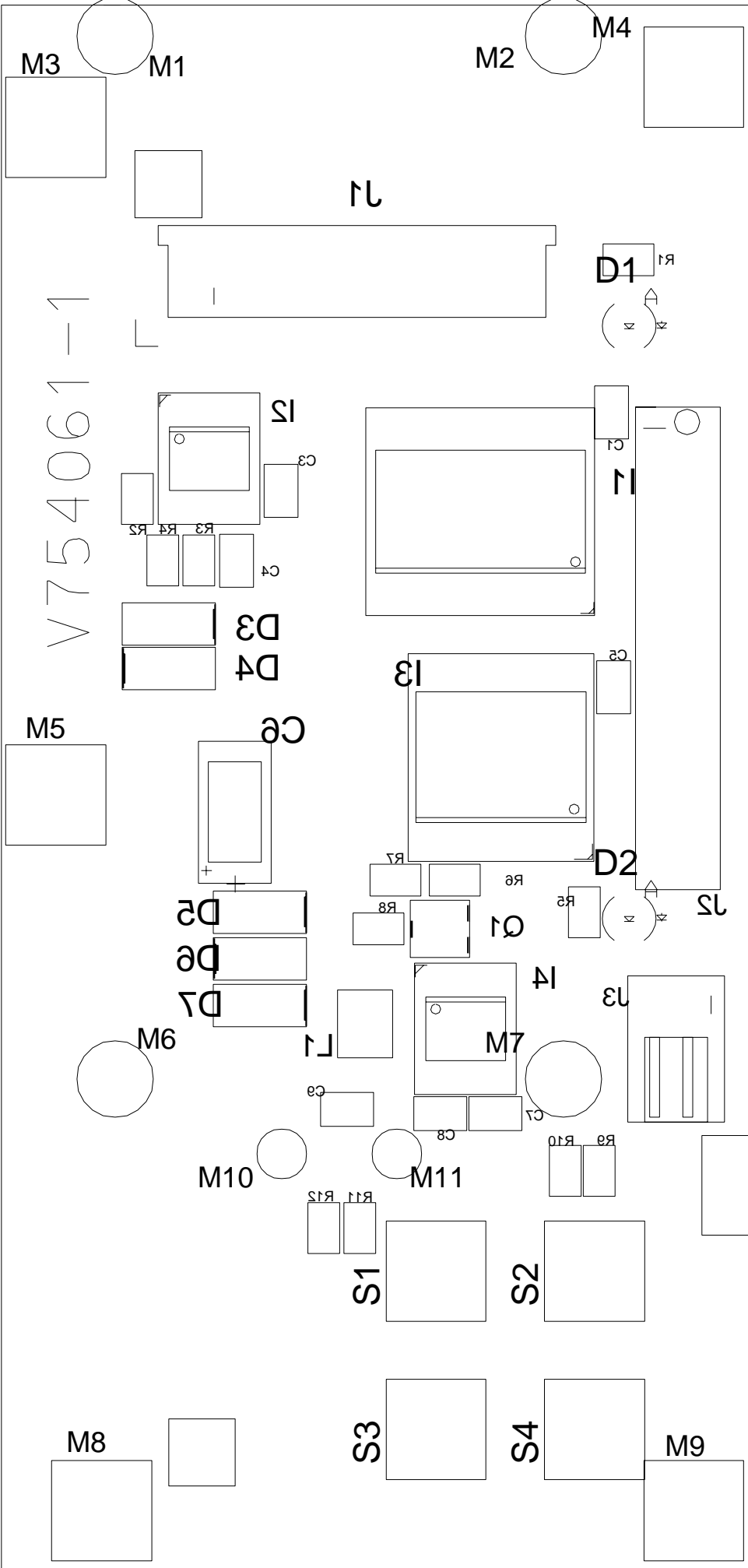
Name	SIRIUS POWER SUPPLY	Sheet	7
Module No	V56	Index	1
PCB No	V754044	Rev	1
Date	27-01-2000	Drawn	HCC
Checked	----	Division	BCS
BARCO NV			



FRONT

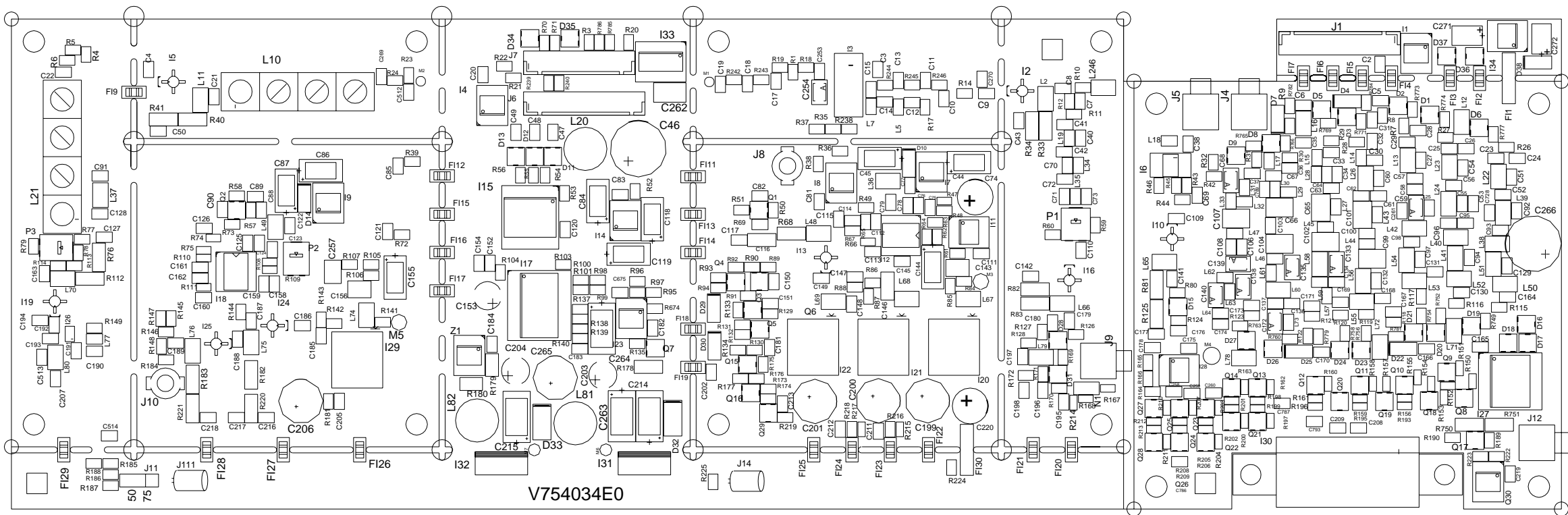
V5653480

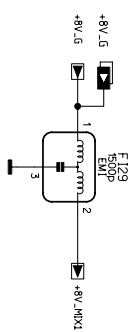
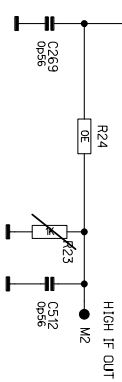
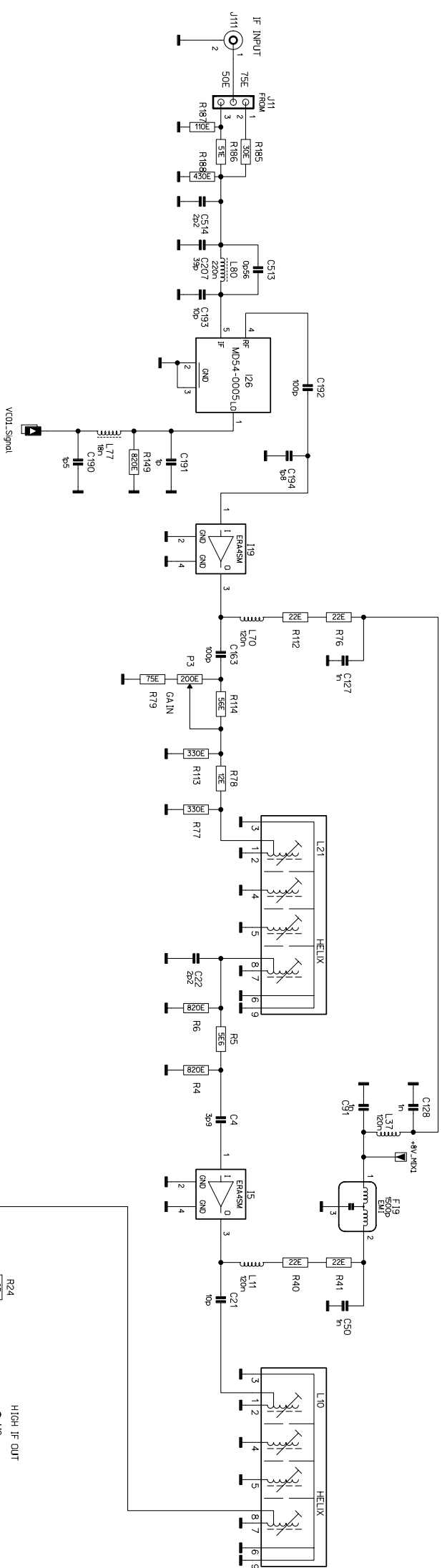




CONVERTER

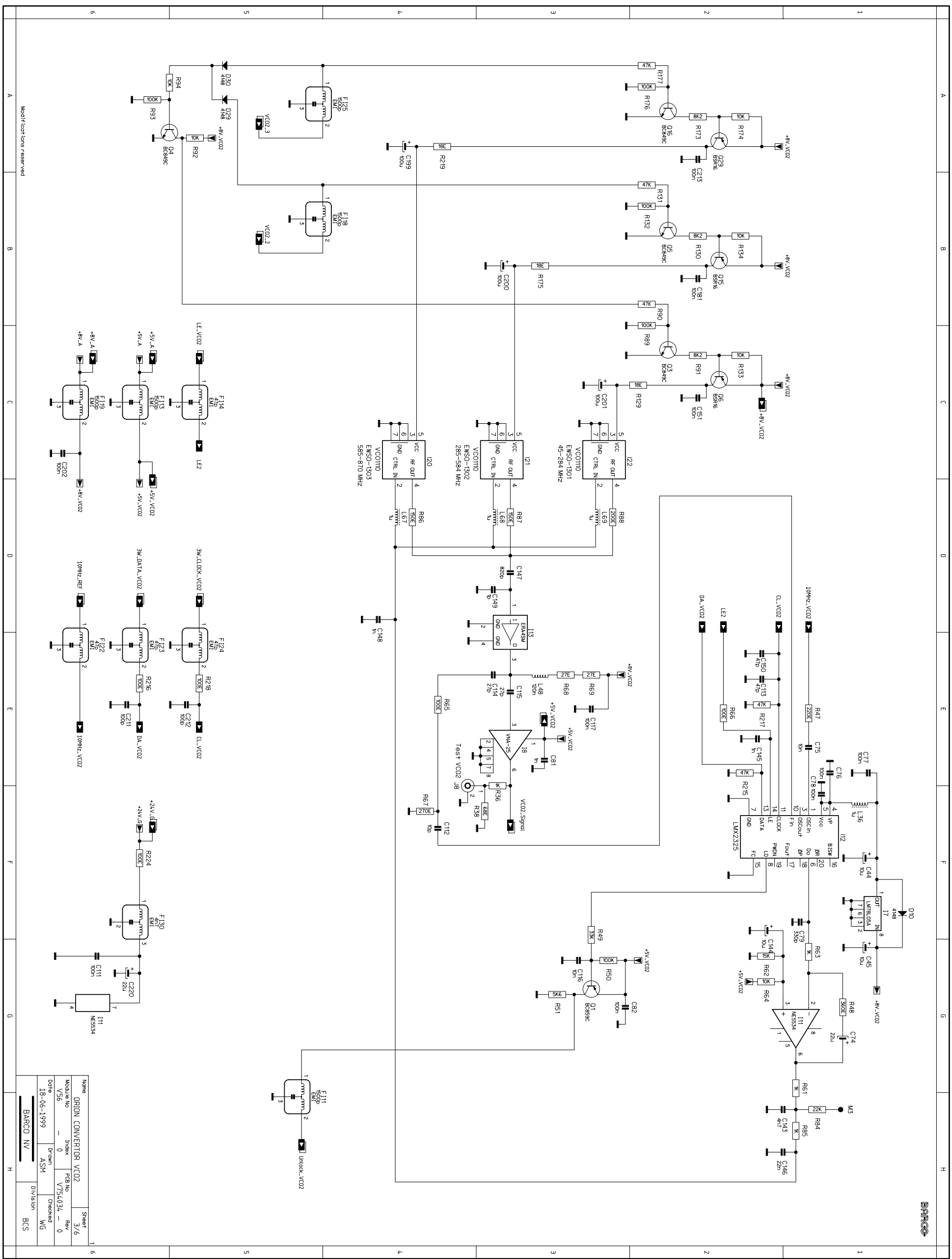
V5653227



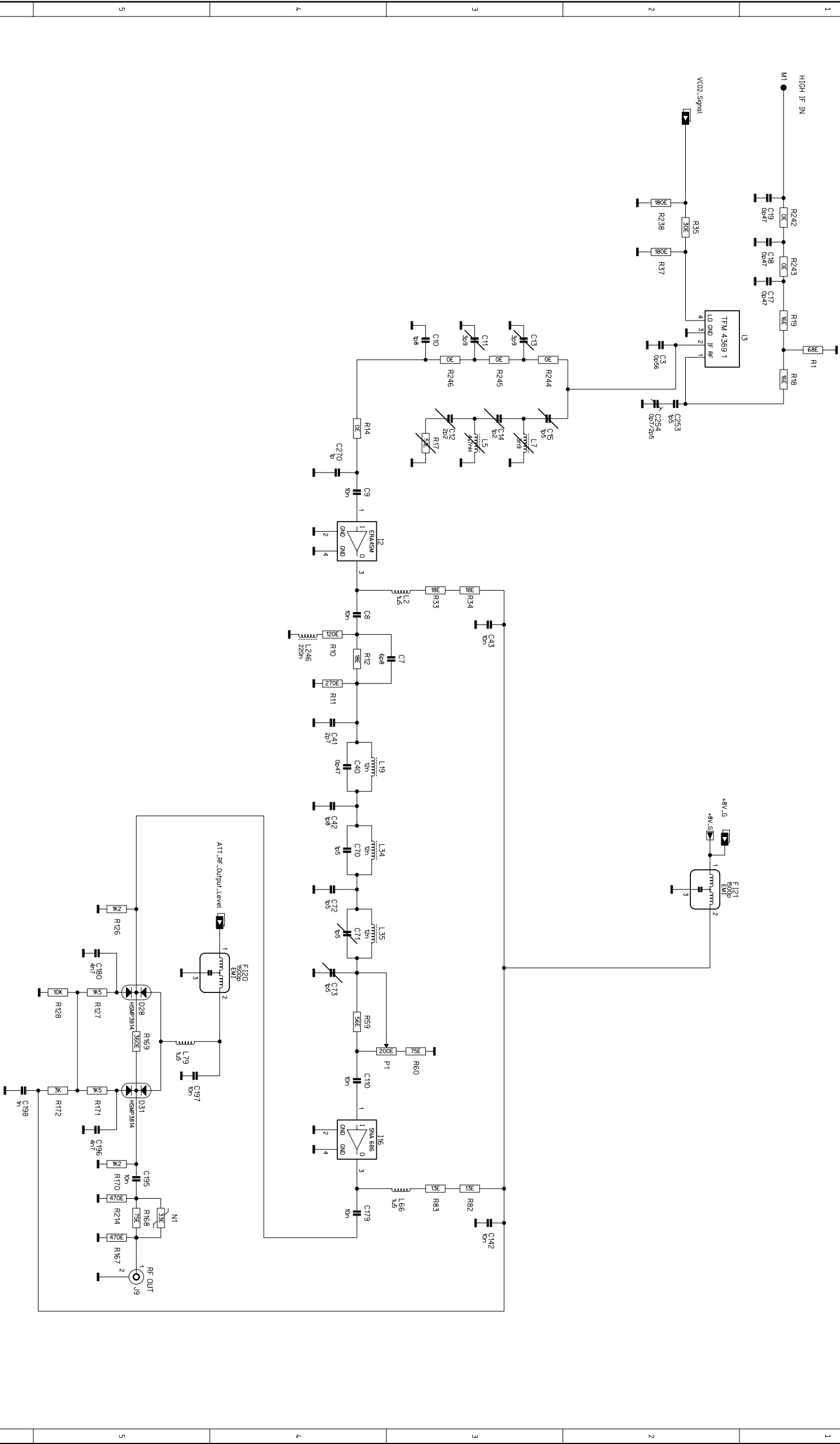


Name			Sheet		5
ORDIN CONVERTER MIXER 1			2/6		
Module No	Index	PCB No	Rev		
V56	0	V75/034	0		
Date	Drawn	Checked	WG		
18-06-1999	ASM				
BARCO NV			D'Vl'sion		
			BCS		

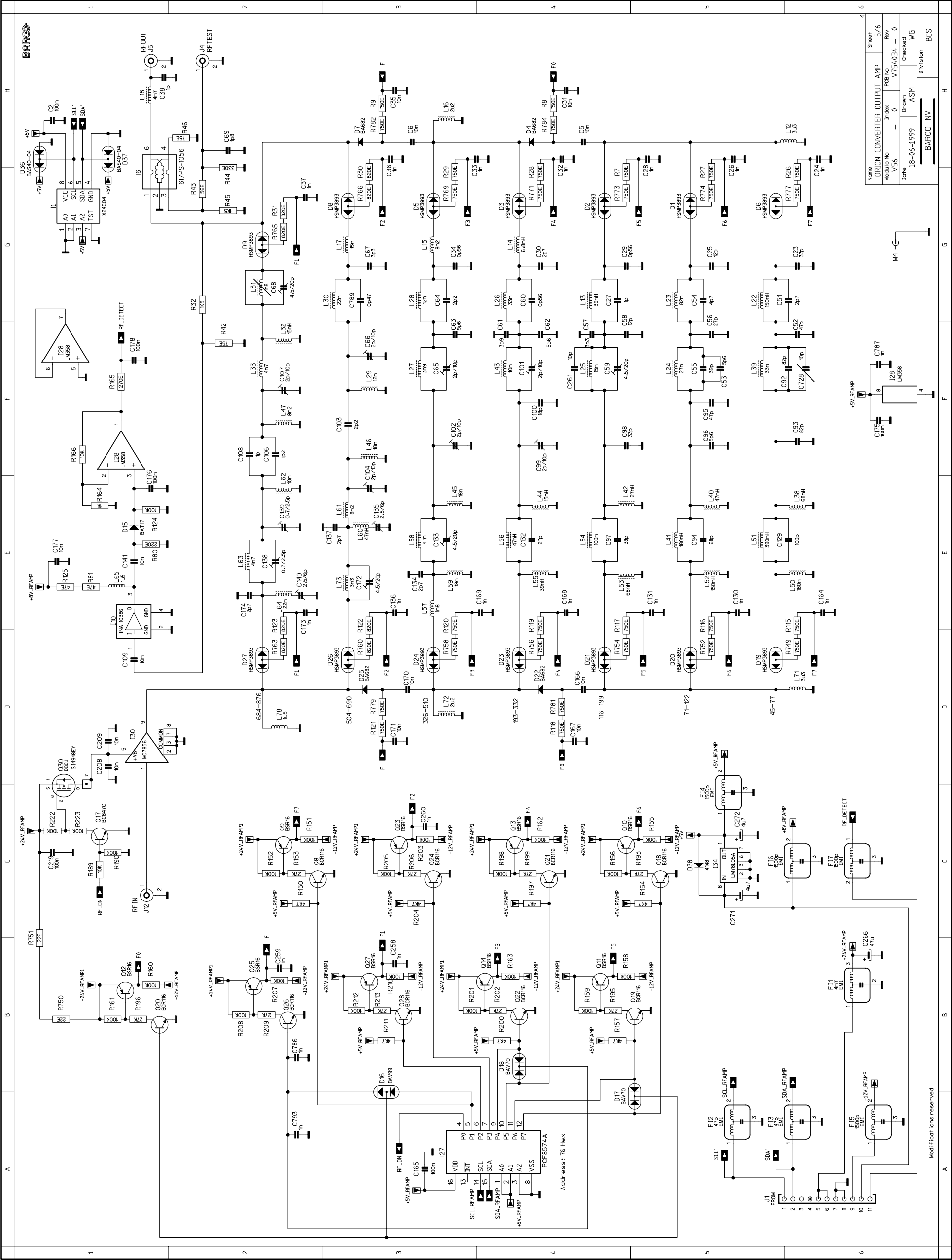
Modifications reserved



Name		Sheet	
ORION CONVERTOR VC02		3/6	
Module No	Index	PCB No	Rev
V56	- 0	V754034	- 0
Date	Drawn	Checked	
18-06-1999	ASM		WG
BARCO NV		Division	
		BCS	

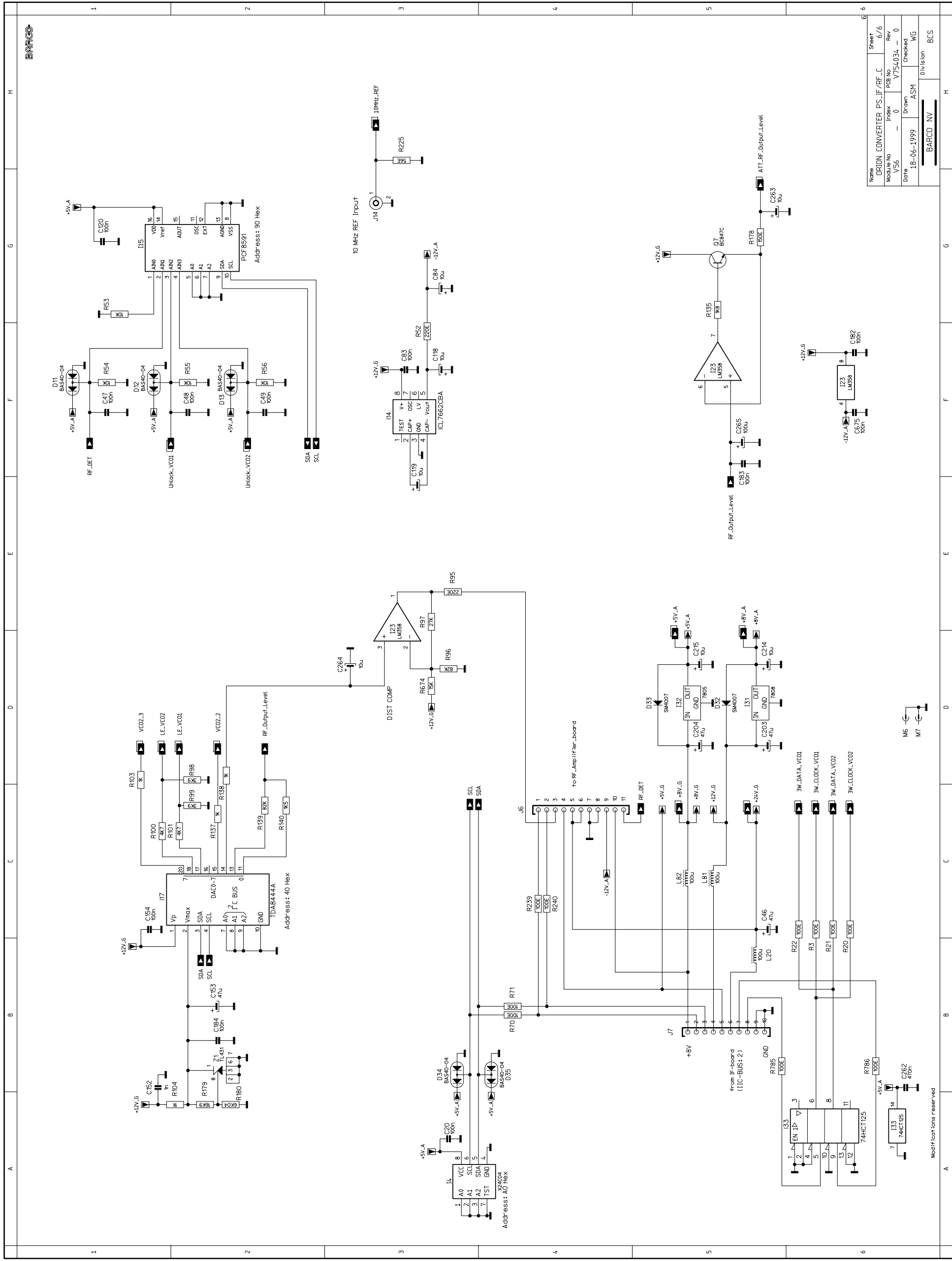


Name		Sheet	
ORION CONVERTOR MIXER 2		4/6	
Module No	Index	PCB No	Rev
V56	—	V754034	—
Date	18-06-1999	Drawn	Checked
		ASM	WG
Barcode NV		Division	
		BCS	



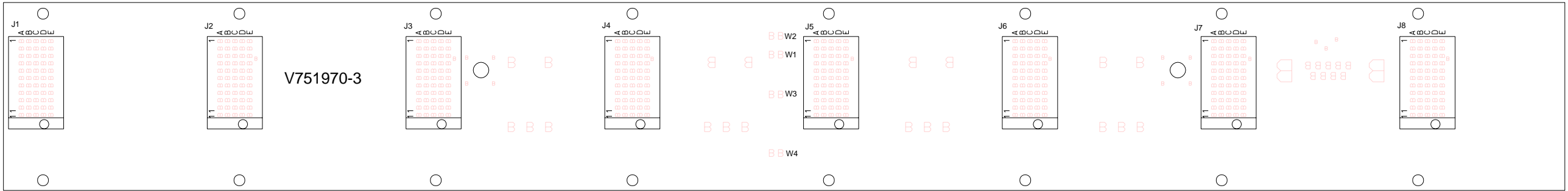
Modifications reserved

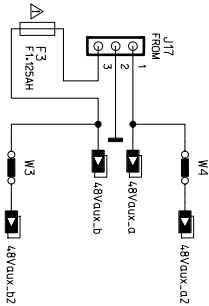
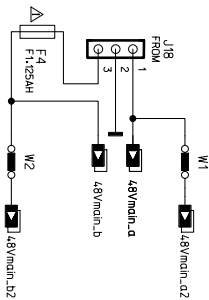
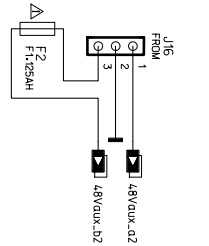
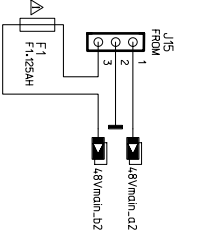
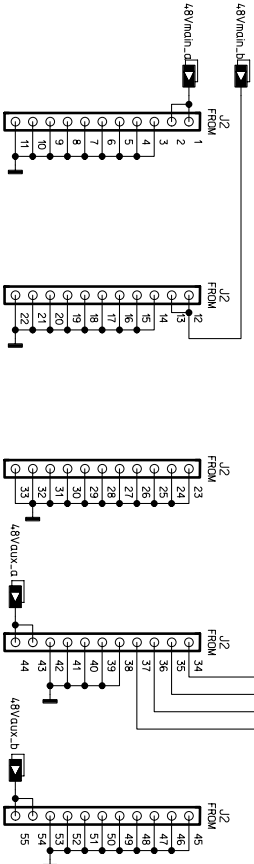
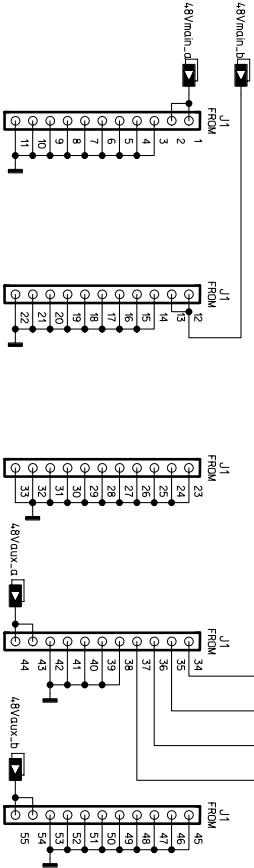
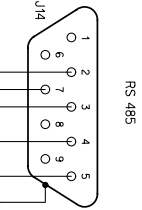
Name	ORION CONVERTER OUTPUT AMP	Sheet	5/6
Module No	V56	PCB No	Rev
Index	0	V754034	0
Date	18-06-1999	Drawn	ASM
Checked	WG	Division	BCS



BACKBOARD RACK

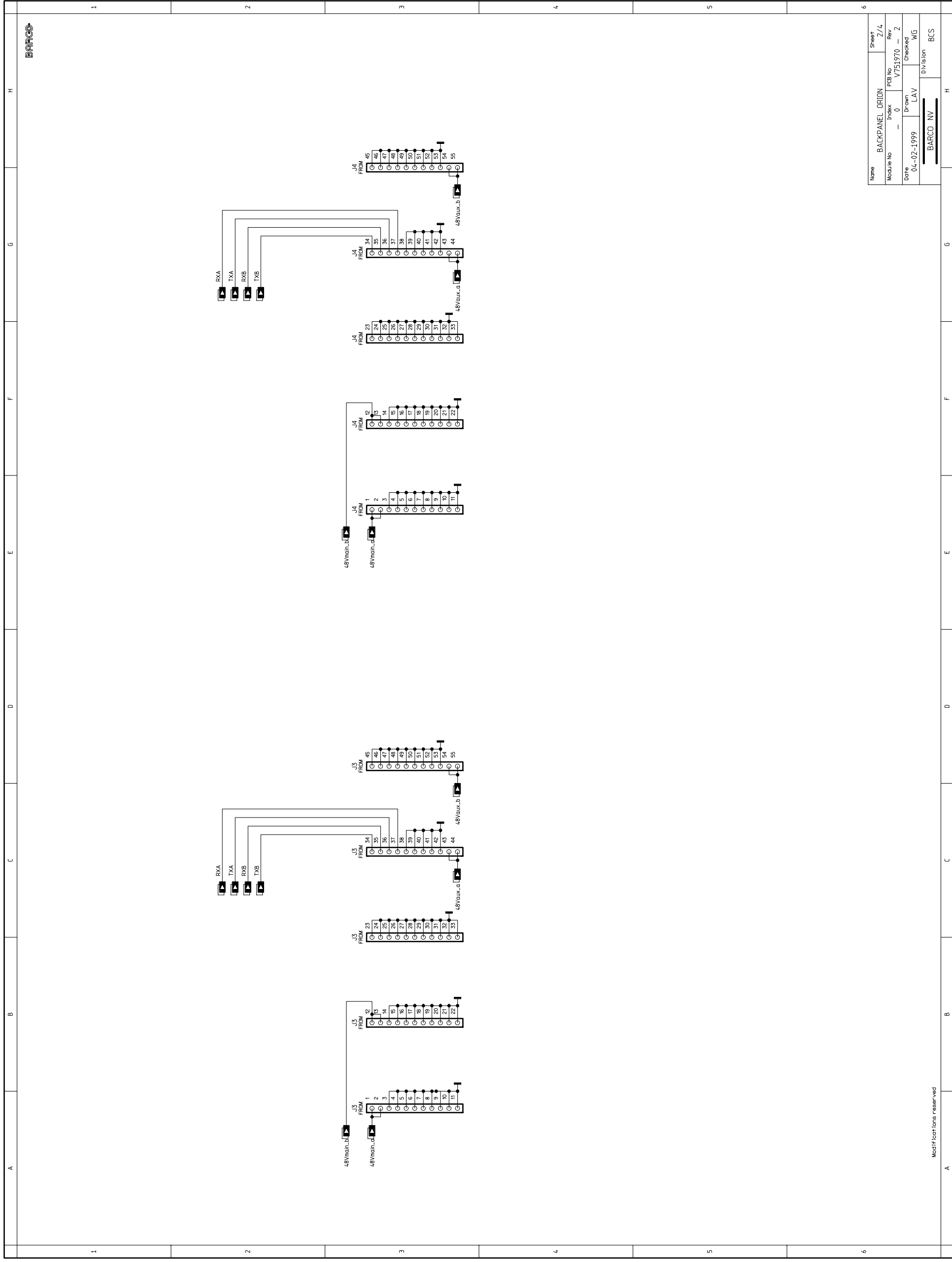
V5653201





Modifications reserved

Name		BACKPANEL ORION		Sheet
Module No		Index	PCB No	Rev
0		0	V751970	2
Date		Drawn	Checked	
01-02-1999		LAV	WGS	
Barcode		Division		
BARCO NV		BCS		



A	B	C	D	E	F	G	H
---	---	---	---	---	---	---	---



1							
---	--	--	--	--	--	--	--

2							
---	--	--	--	--	--	--	--



4							
---	--	--	--	--	--	--	--

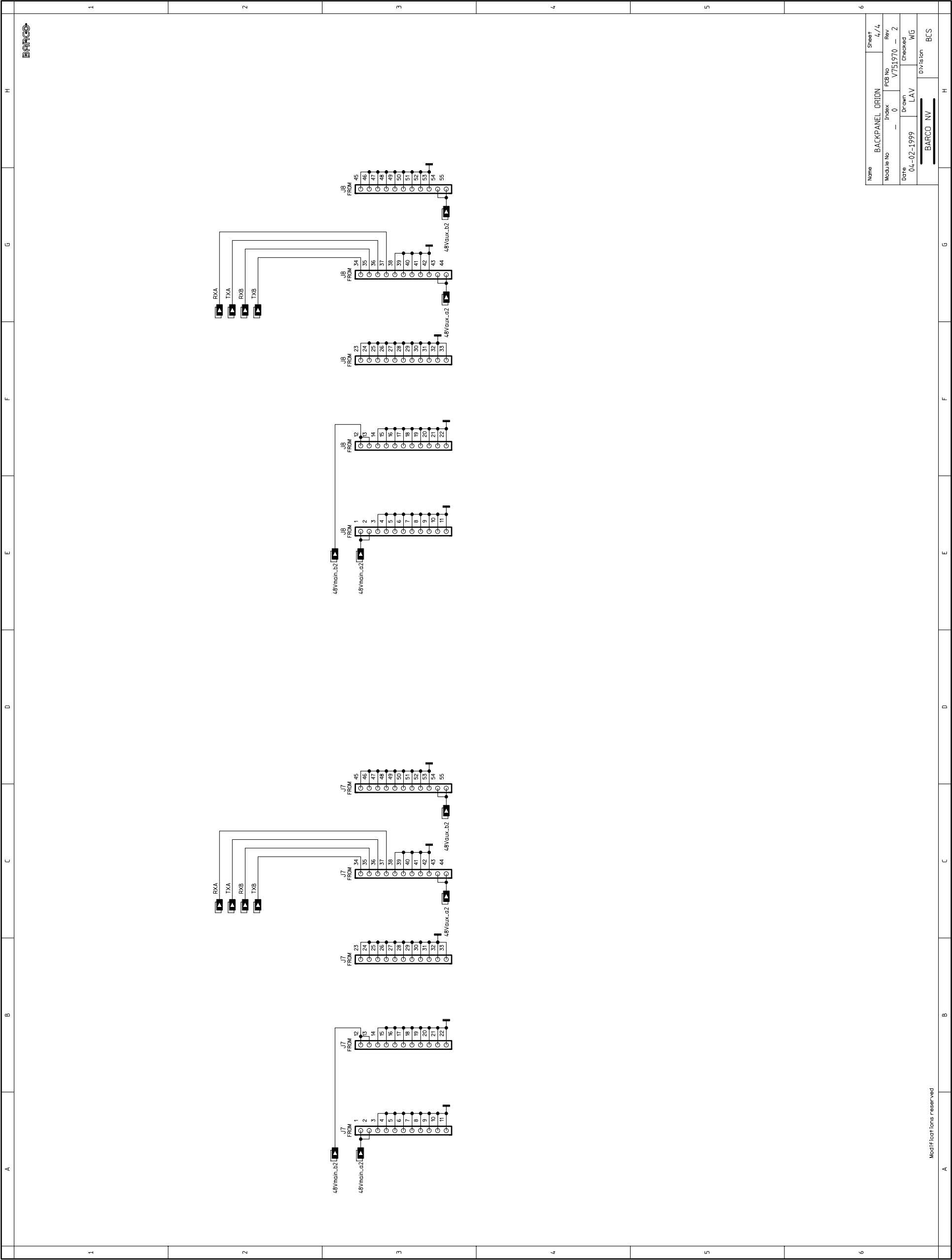
5							
---	--	--	--	--	--	--	--

6							
---	--	--	--	--	--	--	--

Name		BACKPANEL ORION		Sheet		3/4	
Module No		Index		PCB No		Rev	
06-02-1999		LAV		Checked		WG	
BARCO NV		Division		BCS			

A	B	C	D	E	F	G	H
---	---	---	---	---	---	---	---

Modifications reserved



Dear Customer,

BARCO Communication Systems is constantly improving the manuals provided with its products and software. We would appreciate your comments on this manual. Please fill out this form and send it to us or fax a photocopy of it. You can find our address and fax number on the front page of this manual.

You can also e-mail your remarks to support.bcs@barco.com. Please mention "Manual Remarks" and the manual part number and index in the message subject.

Company information

Company name: _____
Your name: _____
E-mail: _____
Phone: _____

We will only contact you when we want to further explore your comments.

I'm working with this device as

- ☐ Installer
☐ Operator
☐ Other: _____

The information in this manual is:

- | | | |
|--------------------------------------|--|--|
| <input type="radio"/> very accurate | <input type="radio"/> correct | <input type="radio"/> inaccurate |
| <input type="radio"/> very complete | <input type="radio"/> sufficient | <input type="radio"/> incomplete |
| <input type="radio"/> very clear | <input type="radio"/> understandable | <input type="radio"/> confusing |
| <input type="radio"/> well organized | <input type="radio"/> fairly organized | <input type="radio"/> poorly organized |

Could you easily find what you needed?

- ☐ Yes, I could.
☐ It could be easier.
☐ No I couldn't.

Why?

Please write down your suggestions below. If you have found any errors in this manual, please indicate the topic and the page number.

Thank you for helping us improve our documentation.